

AMBER COVE SERIES

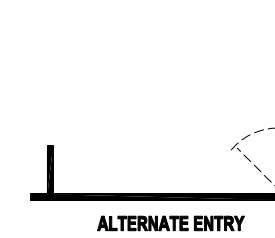
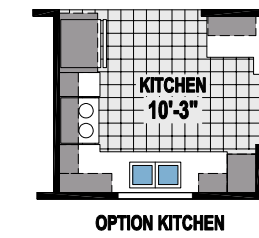
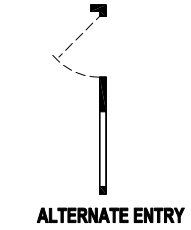
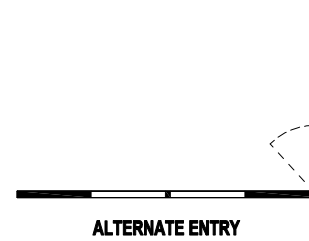
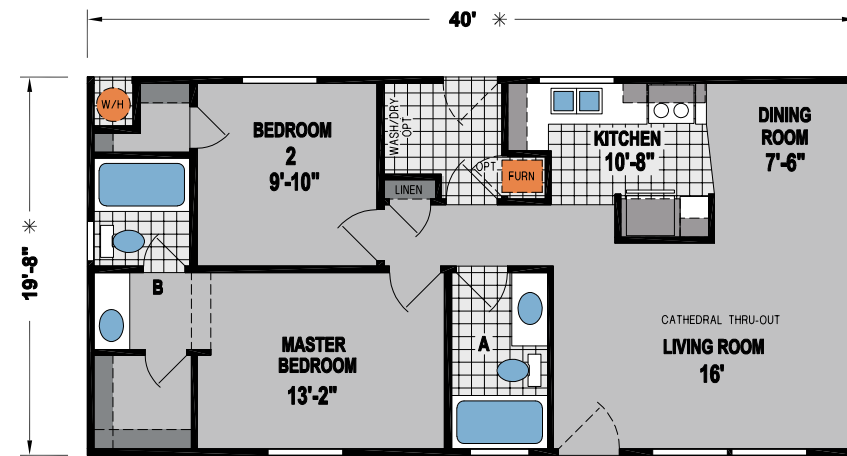
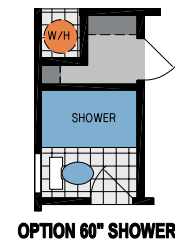
Home is where the heart is, where memories are created, and where life's most important moments are celebrated. Since 1951, Skyline Homes has grown to be one of the most recognized factory-built home builders; a recognition earned by consistently delivering style, quality, and craftsmanship in every home we build. From start to finish, we are involved in your home every step of the way.

At Skyline Homes, we don't just build homes, we build dreams. We design and build our homes with people in mind. From contemporary style to traditional design, we are committed to providing features and finishes that can be enjoyed for a lifetime. We promise you will feel the difference of a Skyline Home. It's the feeling of comfort; the feeling of coming home to a place you truly love.



AMBER COVE
4610CTC

2 BED-2 BATH
786 SQ.FT.

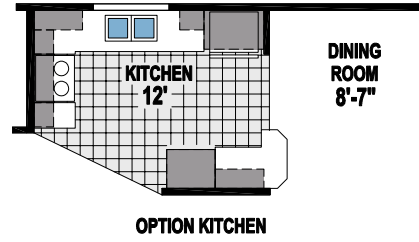


AMBER COVE
4602CTC

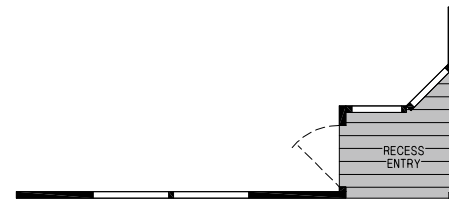
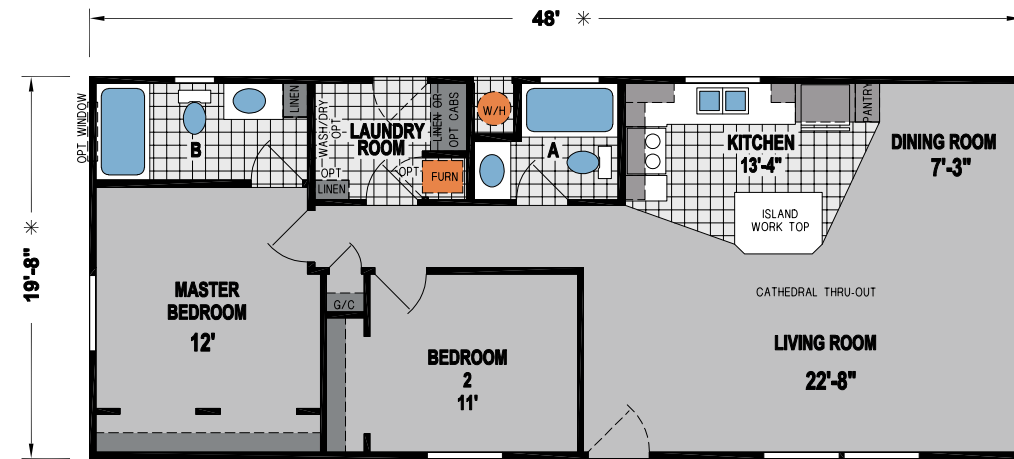
2 BED-2 BATH
865 SQ.FT.

AMBER COVE
4604CTC

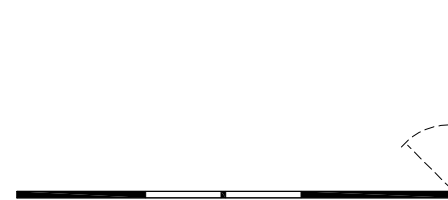
2 BED-2 BATH
944 SQ.FT.



OPTION
60"
SHOWER



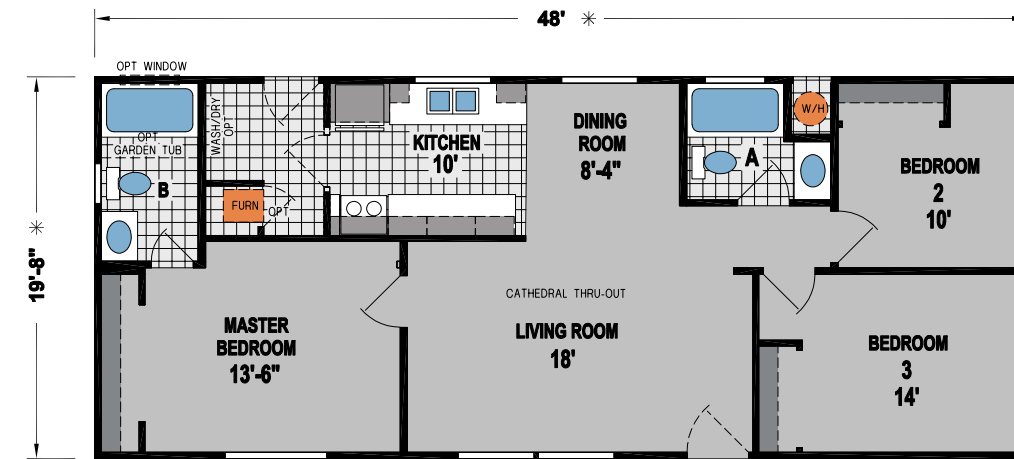
OPTION RECESSED ENTRY



ALTERNATE ENTRY



OPTION
60"
SHOWER

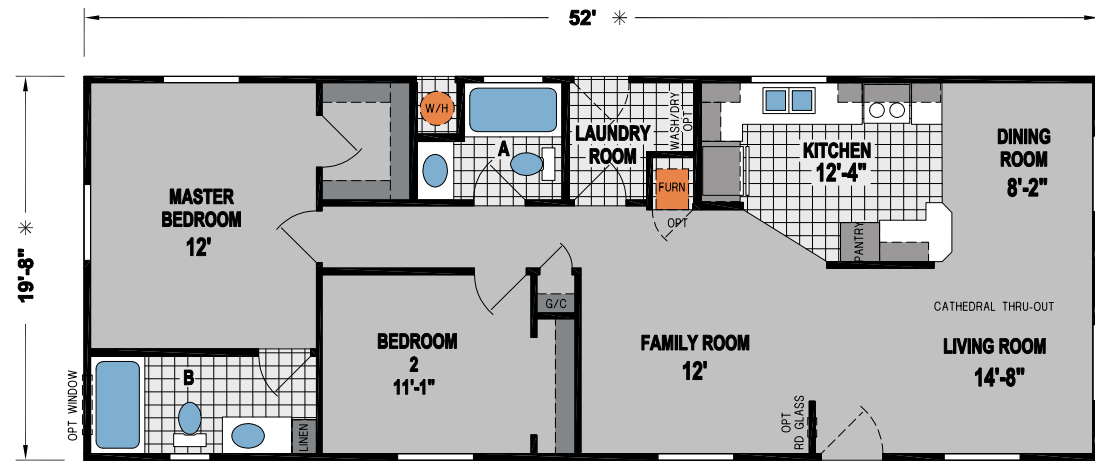


AMBER COVE
4617CTC

3 BED-2 BATH
944 SQ.FT.

AMBER COVE
4607CTC

2 BED-2 BATH
1022 SQ.FT.



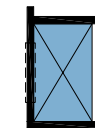
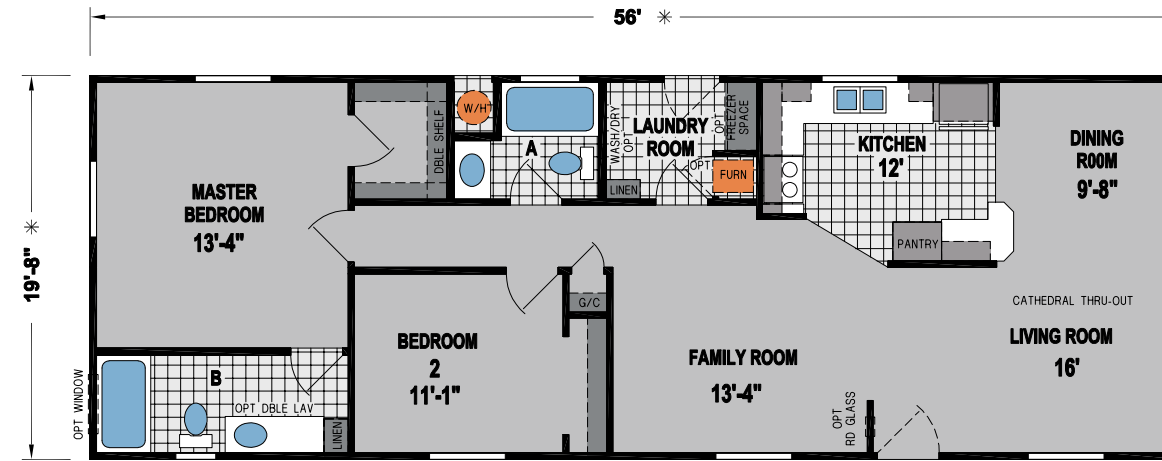
OPTION 3RD BEDROOM



ALTERNATE ENTRY

AMBER COVE
4616CTC

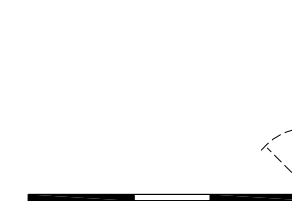
2 BED-2 BATH
1101 SQ.FT.



OPTION 60" SHOWER



OPTION 3RD BEDROOM



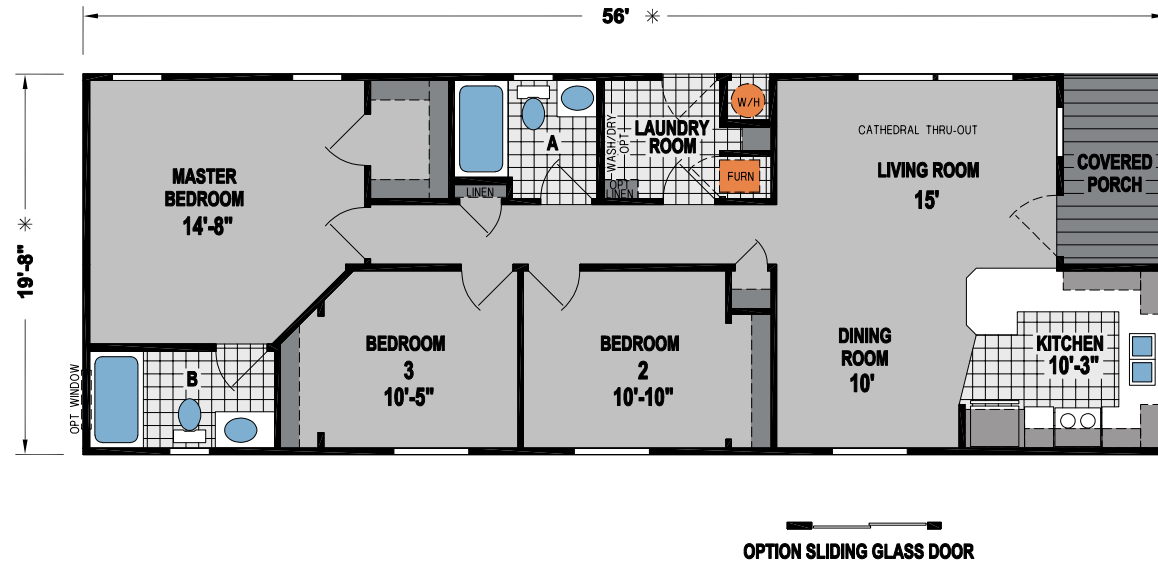
OPTION DOOR LOCATION

AMBER COVE
4608CTC

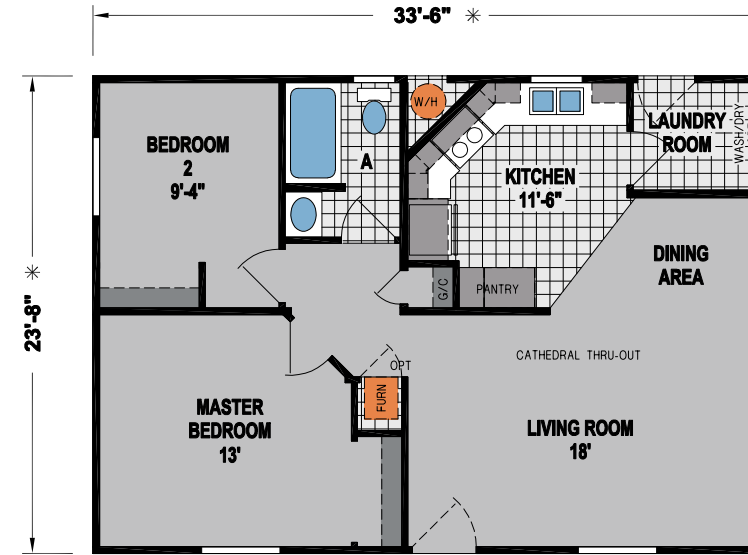
3 BED-2 BATH
1048 SQ.FT.



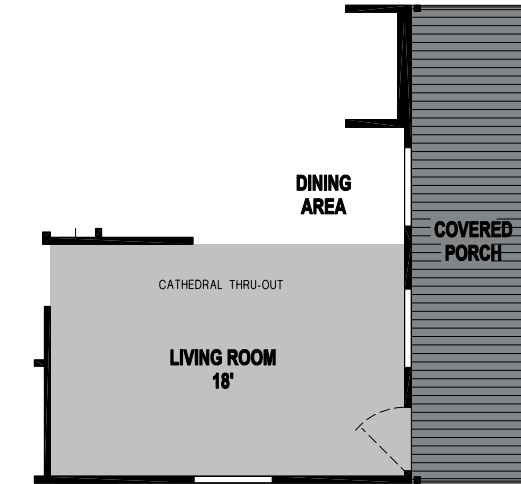
OPTION
60"
SHOWER



OPTION SLIDING GLASS DOOR



OPTION DOOR LOCATION



OPTION PORCH

AMBER COVE
K601CT

2 BED-1 BATH
793 SQ.FT.

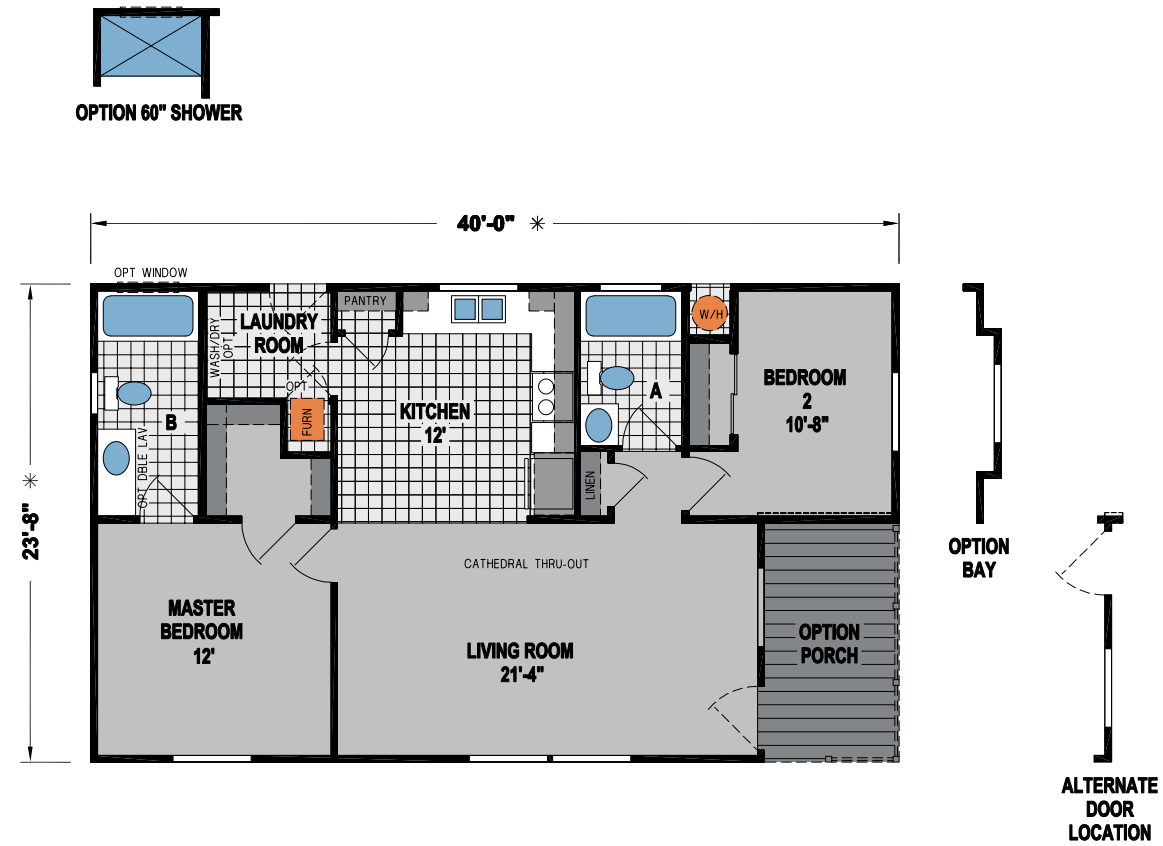
AMBER COVE
K610CT

3 BED-2 BATH
946 SQ.FT.



AMBER COVE
K610CTB

2 BED-2 BATH
867 SQ.FT.



AMBER COVE
K604CT

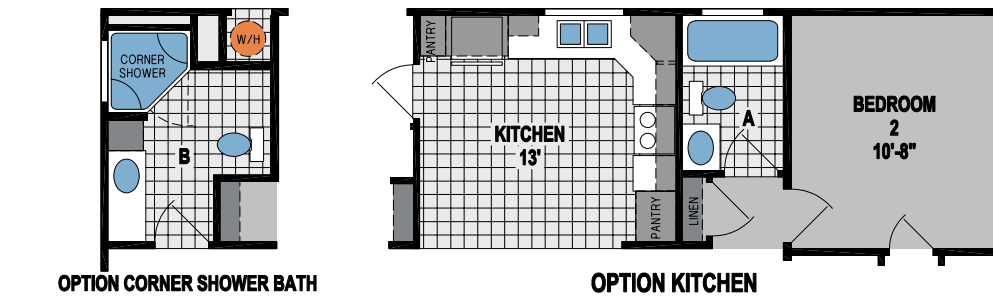
2 BED-2 BATH
1041 SQ.FT.



OPTION MASTER
BEDROOM / BATH

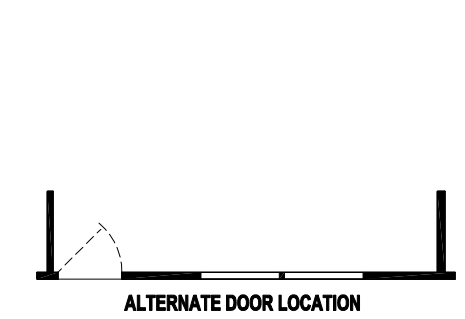
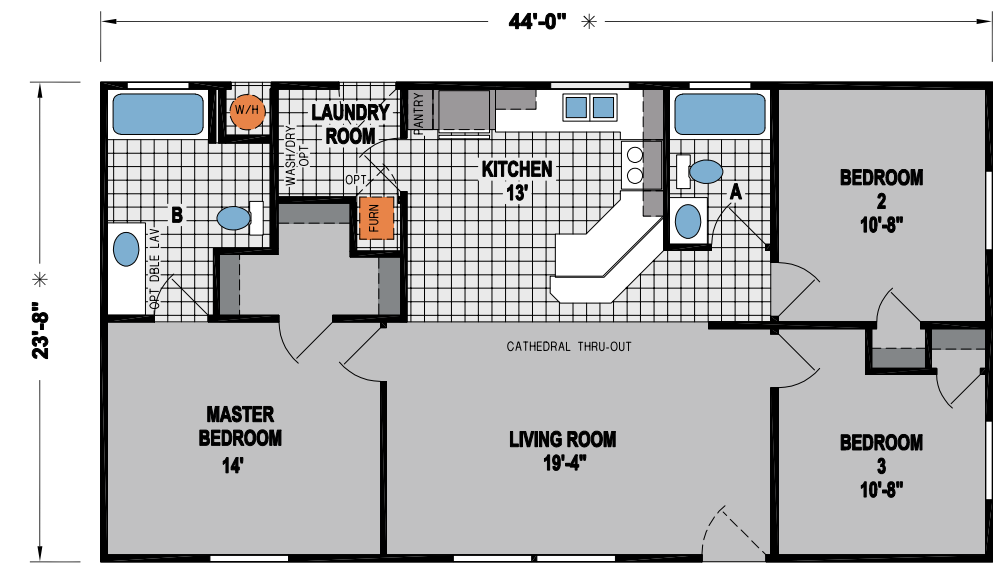


OPTION KITCHEN

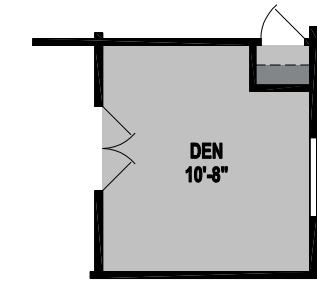


OPTION CORNER SHOWER BATH

OPTION KITCHEN



ALTERNATE DOOR LOCATION



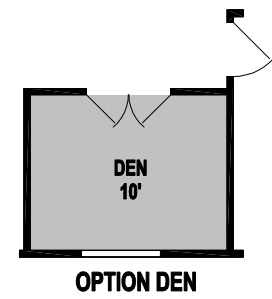
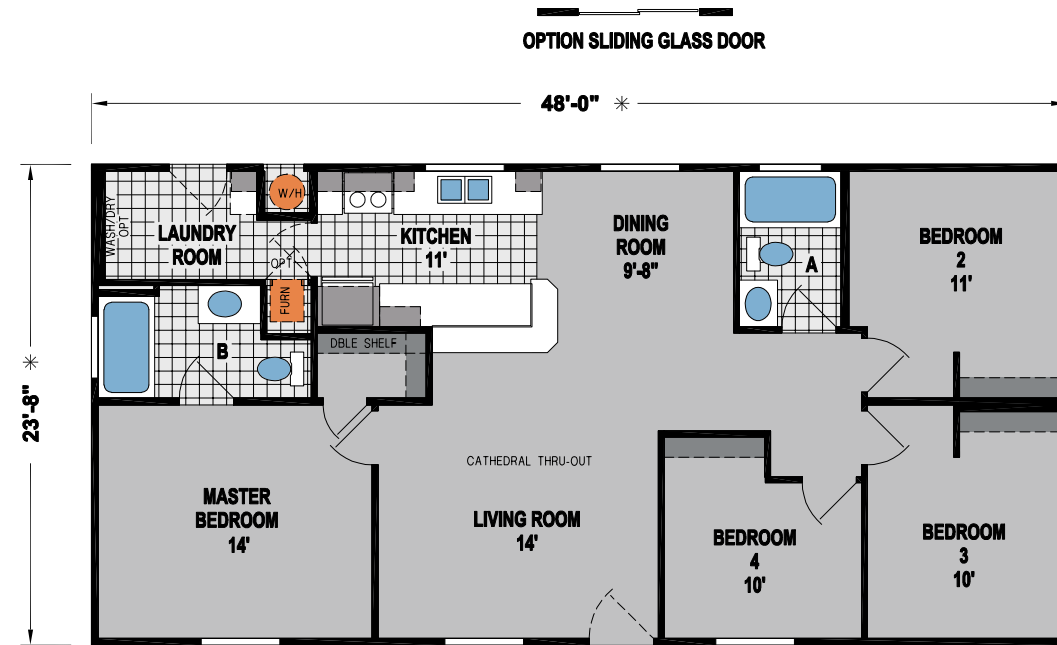
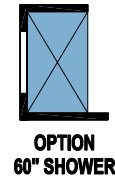
OPTION DEN

AMBER COVE
K620CTC

3 BED-2 BATH
1041 SQ.FT.

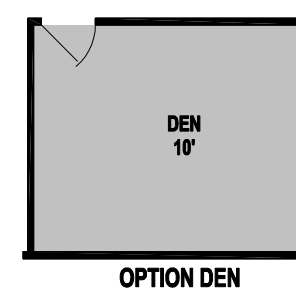
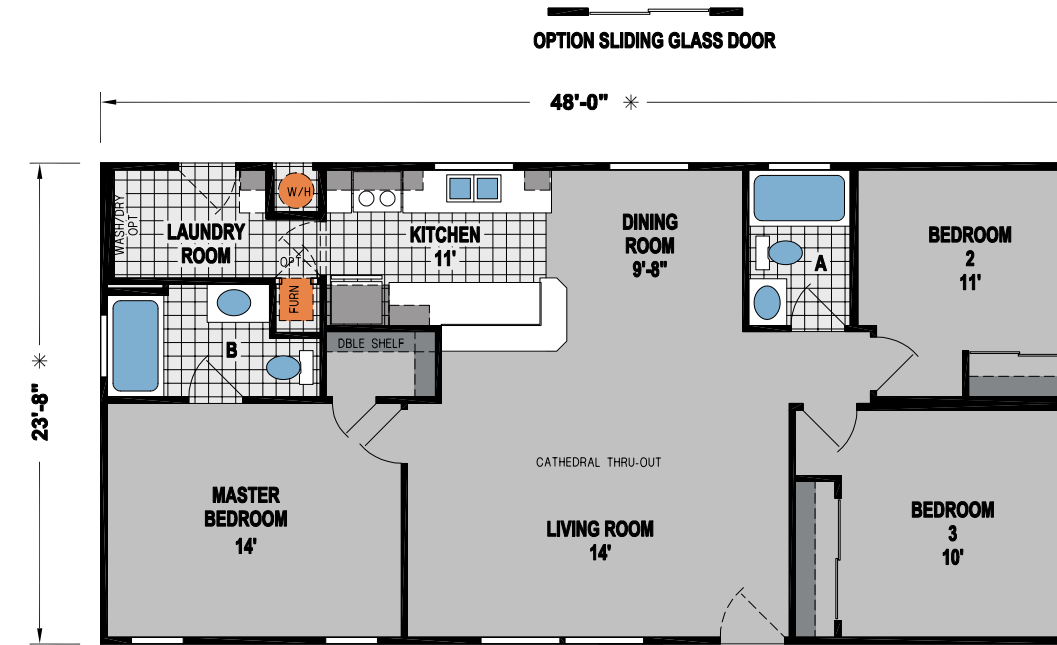
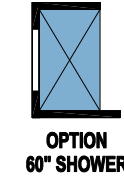
AMBER COVE
K600CT

4 BED-2 BATH
1136 SQ.FT.



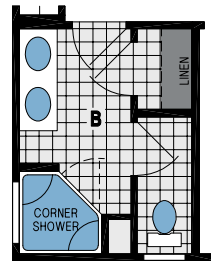
AMBER COVE
K600CTB

3 BED-2 BATH
1136 SQ.FT.



AMBER COVE
K605CT

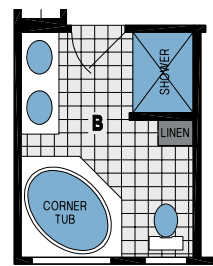
3 BED-2 BATH
1228 SQ.FT.



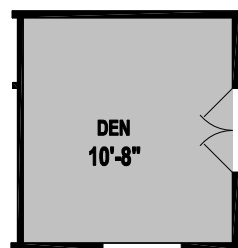
OPTION CORNER SHOWER BATH



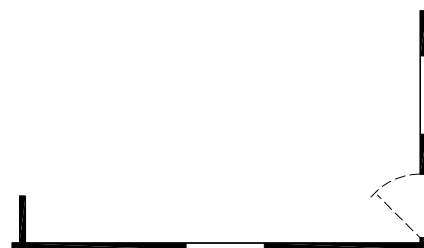
OPTION 60" SHOWER



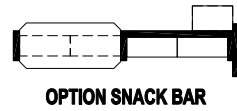
OPTION DELUXE BATH



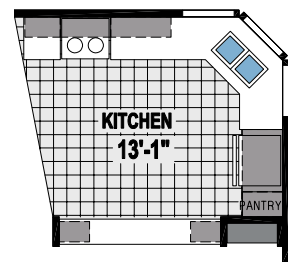
OPTION DEN



OPTION DOOR LOCATION



OPTION SNACK BAR



OPTION KITCHEN

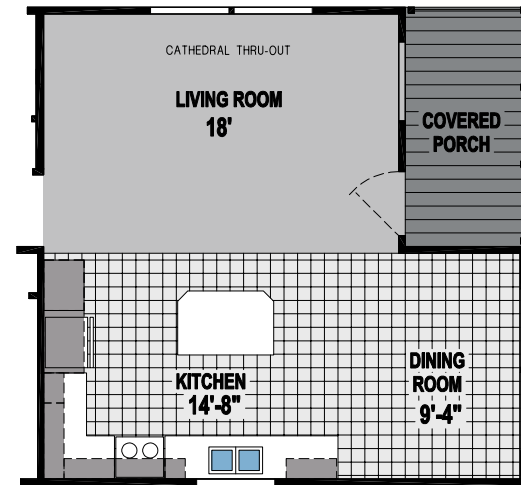
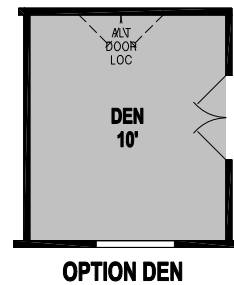
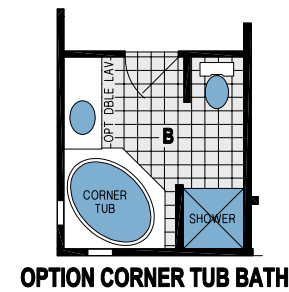
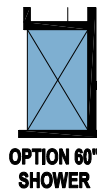
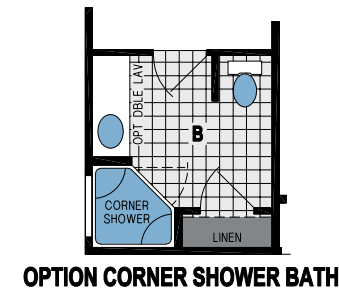
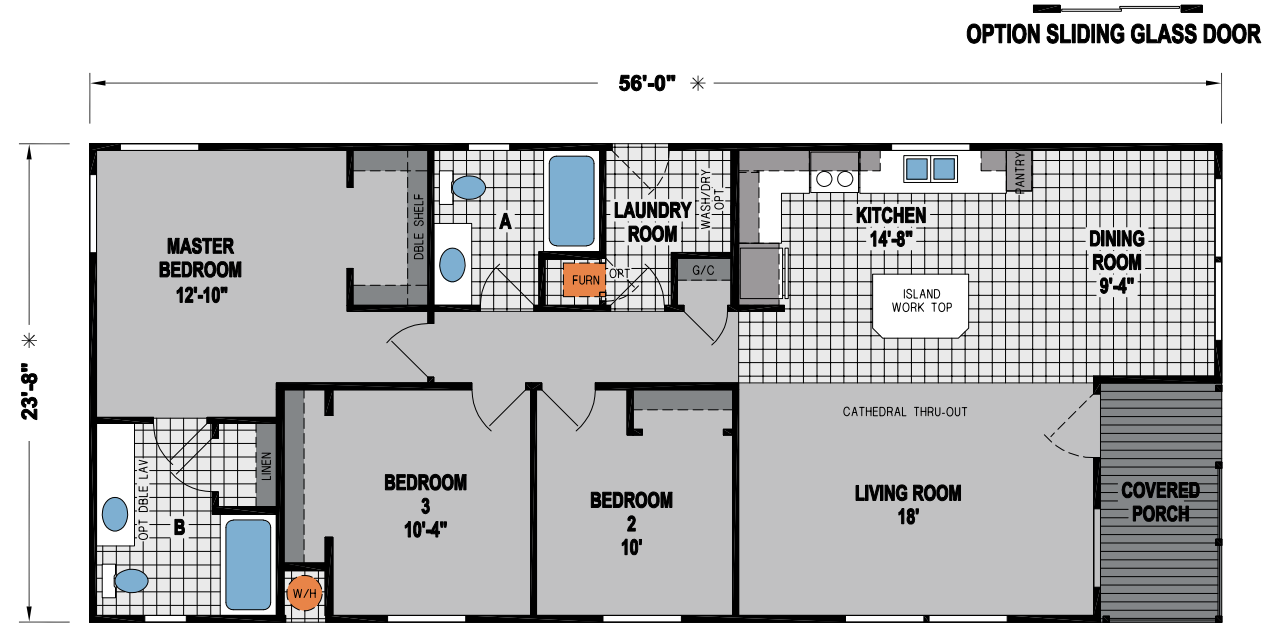


K605CT



AMBER COVE
K619CT

3 BED-2 BATH
1254 SQ.FT.



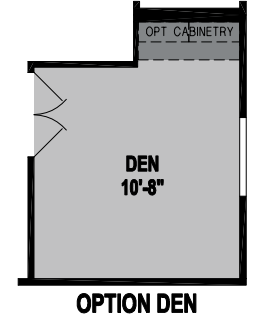
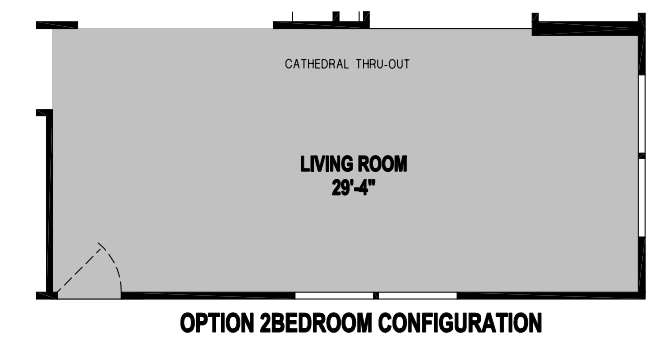
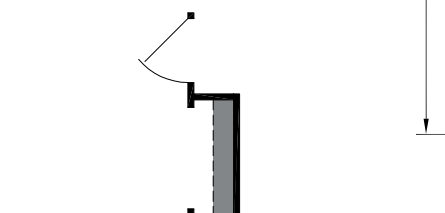
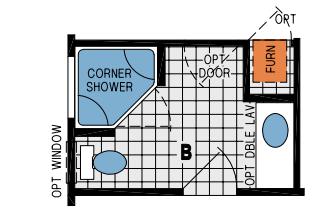
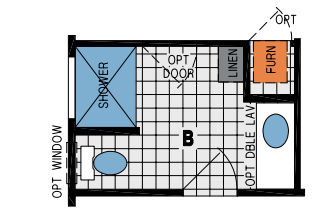
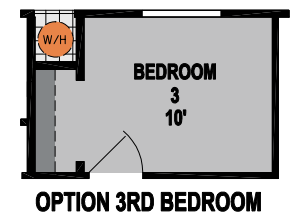
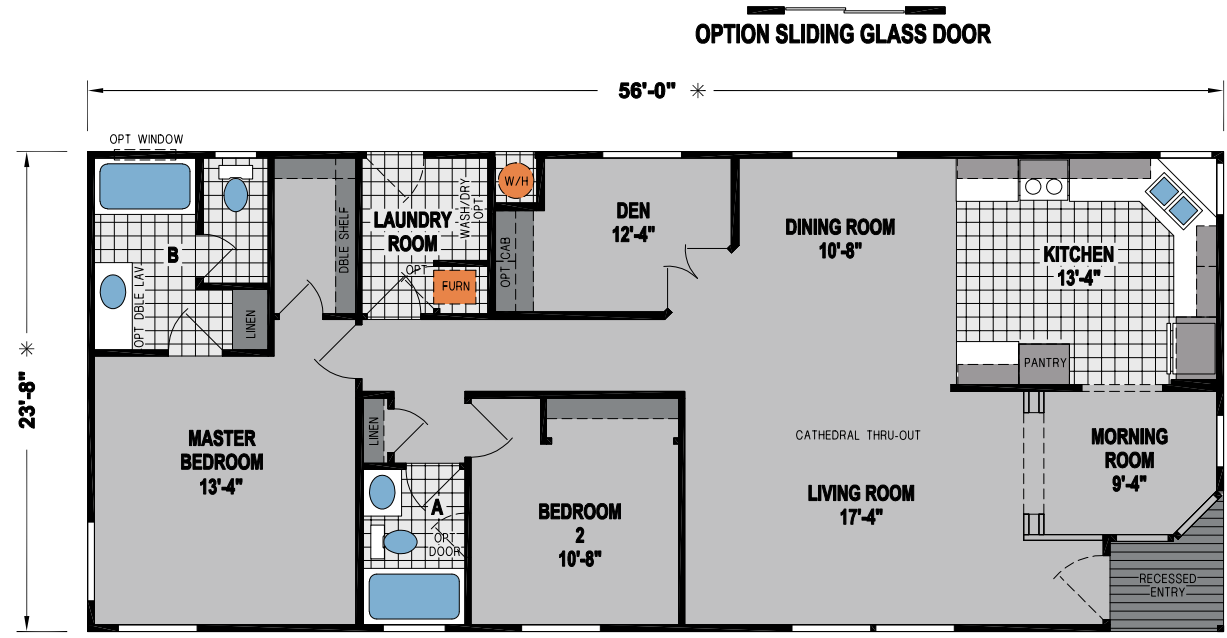
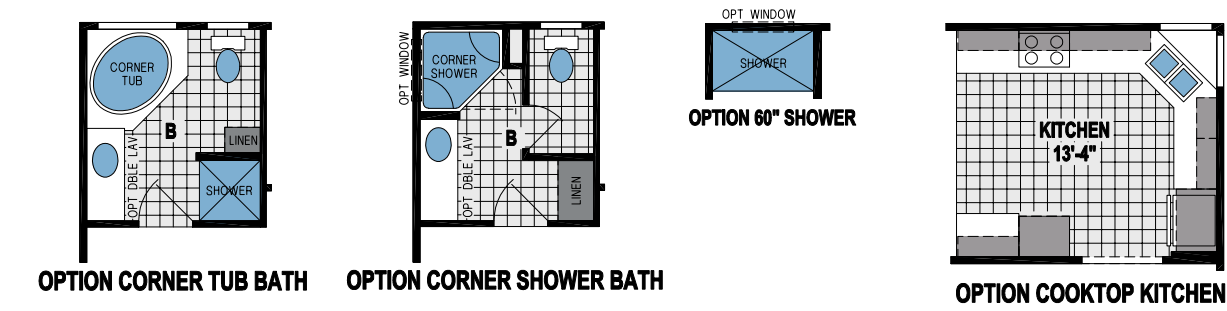
OPTION SLIDING GLASS DOOR



K619CT

AMBER COVE
K638CT

2 BED-2 BATH
1289 SQ.FT.



AMBER COVE
K770CT

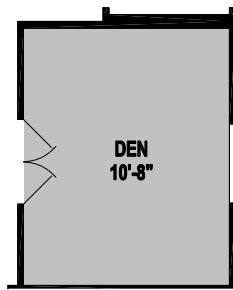
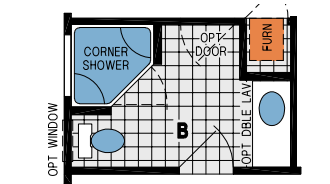
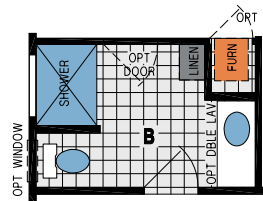
3 BED-2 BATH
1173 SQ.FT.

AMBER COVE
K755CT

3 BED-2 BATH
1280 SQ.FT.

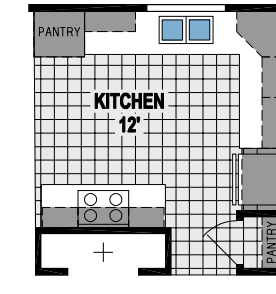
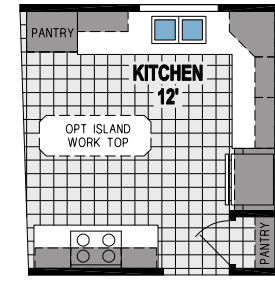
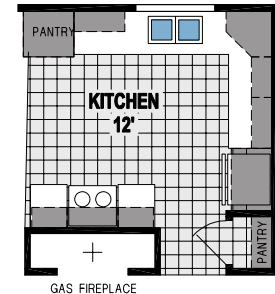
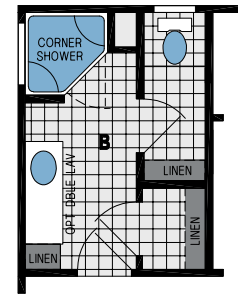


OPTION SLIDING GLASS DOOR



ALTERNATE ENTRY LOCATION

OPTION DEN



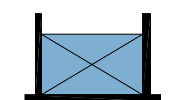
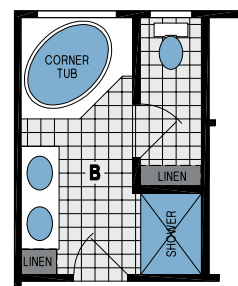
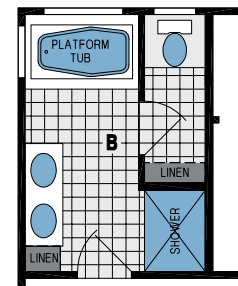
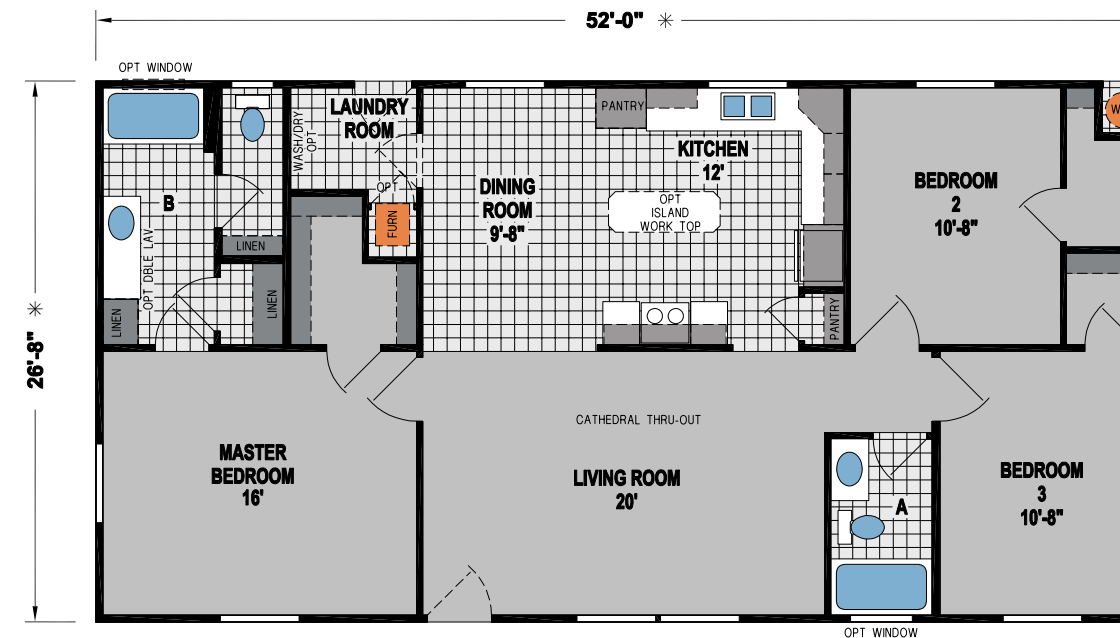
OPTION CORNER SHOWER BATH

OPTION FIREPLACE

OPTION COOKTOP

OPTION COOKTOP/FIREPLACE

OPTION SLIDING GLASS DOOR



OPTION CORNER TUB BATH

ALTERNATE DOOR LOCATION

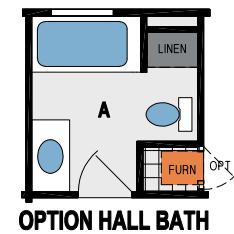
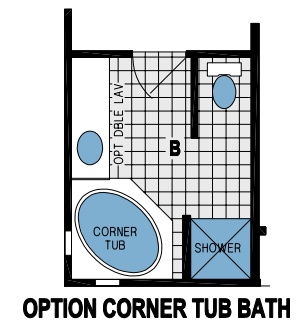
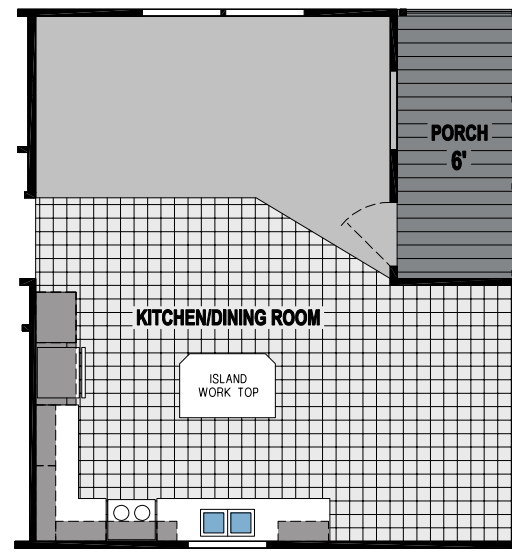
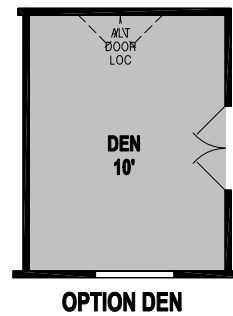
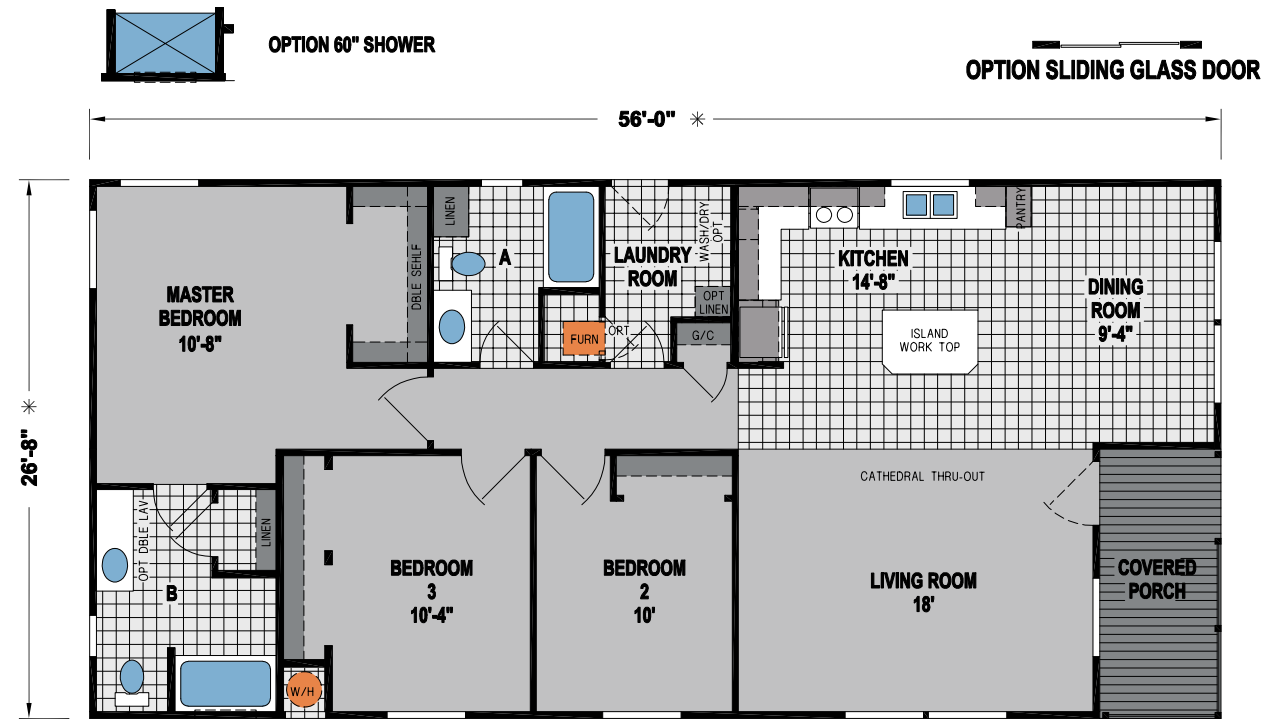
OPTION 60" SHOWER

AMBER COVE
K729CT

3 BED-2 BATH
1386 SQ.FT.

**AMBER COVE
K719CT**

3 BED-2 BATH
1413 SQ.FT.



OPTION KITCHEN/DINING ROOM

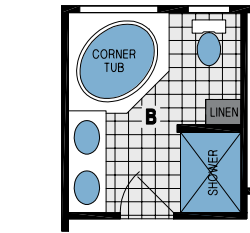
OPTION SLIDING GLASS DOOR



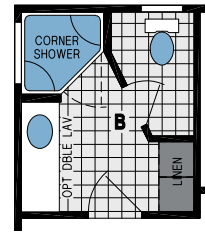
K719CT

AMBER COVE
K711CT

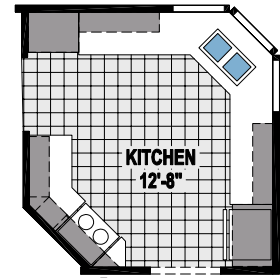
3 BED-2 BATH
1462 SQ.FT.



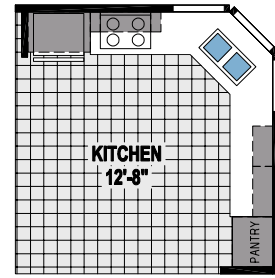
OPTION CORNER TUB BATH



OPTION CORNER SHOWER BATH

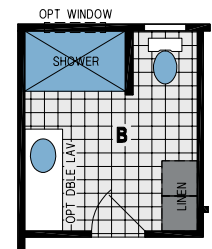


OPTION KITCHEN

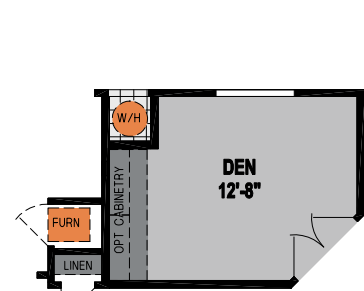


OPT COOKTOP KITCHEN

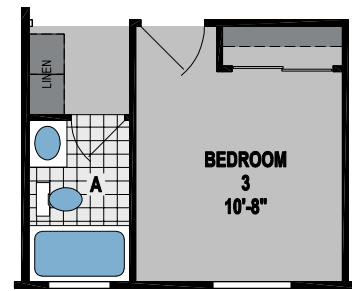
OPTION SLIDING GLASS DOOR



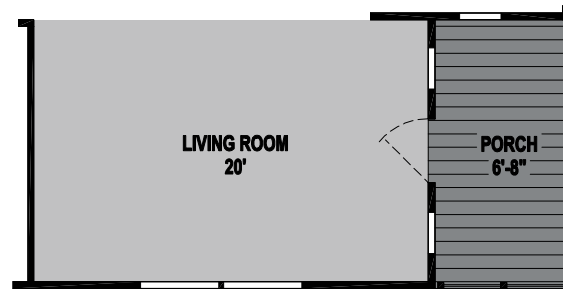
OPTION 60" SHOWER



OPTION DEN



OPTION HALL BATH

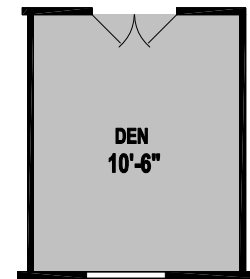


OPTION PORCH

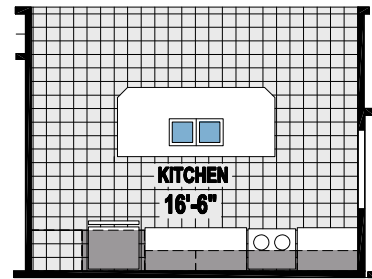


AMBER COVE
K715CT

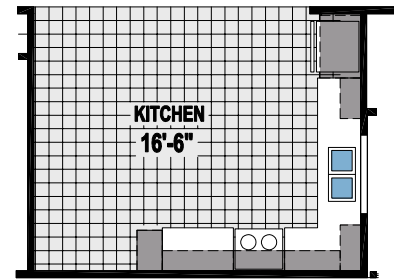
3 BED-3 BATH
1460 SQ.FT.



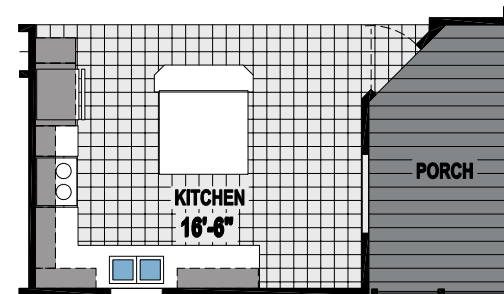
OPTION DEN



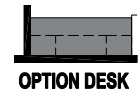
OPTION KITCHEN #1



OPTION KITCHEN #2



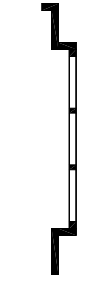
OPTION KITCHEN #3



OPTION DESK



OPTION WINDOWS



OPT BAY WINDOWS



AMBER COVE
K734CT

3 BED-2 BATH
1533 SQ. FT.



AMBER COVE
K771CT

3 BED-2 BATH
1630 SQ.FT.



AMBER COVE
K730CT

5 BED-3 BATH
1760 SQ.FT.



AMBER COVE SERIES

STANDARD FEATURES

CONSTRUCTION

- 8' Sidewalls with Cathedral Ceiling
- 2X6 Floor Joists (Per Plan)
- 2x8 Floor Joists (Per Plan)
- 2X4 Exterior Sidewalls
- R-33 Ceiling Insulation
- R-11 Wall Insulation
- R-22 Floor Insulation
- 20 lb Roof Load
- 3:12 Roof Pitch
- Tongue and Groove OSB Floor Decking
- Dual-Glazed Vinyl Framed Low-E Windows
- Steel Outriggers on Exterior Walls
- PEX Water Lines
- Shut-Off Values at all Sinks and Toilets

EXTERIOR

- Vertical Cement Fiber Siding
- Class "A" Architectural Roof Shingles
- Exterior Window Trim Throughout
- Exterior Light at Front and Rear Doors
- 36" 6-Panel Front Door with Deadbolt, Peephole and Knocker
- 32" Cottage Rear Door with Deadbolt, Peephole and Knocker
- 12" Front Overhang
- 12" Rear Overhang
- 6" Side Eaves (Per Plan)
- Semi-Gloss Exterior Paint

INTERIOR

- 8' Cathedral Ceiling
- ½" Tape and Texture Drywall Throughout
- Hand-Finished Knock-Down Wall Texture
- Low Sheen Interior Paint
- Sculptured Floor Molding and Door Casing
- 2-Panel By-Pass Closet Doors (Per Plan)
- 2-Panel Interior Doors with 3-Mortised Nickel Hinges
- 2-Panel Utility Room Passage Door with Return Air Grill
- Lever Door Handles with Satin Nickel Finish
- Shaw® Carpet
- 3/8" Rebond Capet Pad
- Congoleum® DiamondFlor™ Vinyl Flooring in Kitchen, Dining Room, Baths and Utility (Per Plan)
- 2" Faux Wood Blinds with Faux Wood Valance
- Double Wood Shelf & Pole in Master Bedroom Wardrobe
- Single Wood Shelf and Pole in Guest Bedroom Wardrobe
- Wood Shelving in Hall Closet and Linen Closets
- Wood Shelf and Pole Above Washer/Dryer Area
- Toe Kick Registers in Kitchen and Baths

KITCHEN

- Hardwood Shaker Style Cabinets
- 42" Tall Overhead Cabinets Kitchen
- Crown Molding on all Overhead Cabinets
- ¾" Adjustable Base and Overhead Shelves
- Large Kitchen Island (Per Plan)
- Full Extension Ball Bearing Drawer Guides
- Whirlpool® Brand Name Appliances with Choice of Black or White
- 18.1 Cu. Ft. Frost-Free Refrigerator
- 30" Deluxe Gas Range with Electronic Ignition, Window, Clock and Timer
- 30" Range Hood Vent
- Dining Room Chandelier
- Deep Stainless Steel Self Rimming Sink
- Single-Lever Faucet with Pull-Out Sprayer with Chrome Finish
- Bank of Drawers
- Laminate Countertop
- Laminate Crescent Edge
- 6" Laminate Backsplash

ELECTRICAL / HEATING / PLUMBING

- 100 AMP Exterior Electrical Panel Box
- G.F.I. Protected Outlets in Kitchen and Baths
- Exterior G.F.I. Protected Outlet
- USB Receptacle in Kitchen Area
- Smoke Detectors with Battery Back-Up
- Switch Wall Outlet in Living Room and Bedrooms
- Dining Room Chandelier
- Shut-Off Valves Throughout
- Silent Rocker Light Switches
- 3-Way Switch in Hall and Utility Room
- 40-Gallon Gas Water Heater
- Down Flow Gas Furnace
- Manual Thermostat
- Plumb for Washer
- Prep for Gas Dryer
- Recessed Dryer Vent Box

MASTER BATH FEATURES

- 60" One-Piece Fiberglass Tub / Shower
- China Self Rimming Sink with Overflow and Pop-Up Drain
- Single-Lever Diverter with Chrome Finish
- Dual Control Faucets with Chrome Finish
- Elongated Water-Saver Commode
- Vanity Light Fixture
- Vanity Mirror with Beveled Edge
- Ceiling Exhaust Fan with Light
- 36" High Countertop
- Laminate Countertop
- Laminate Crescent Edge
- 6" Laminate Backsplash
- Full Extension Ball Bearing Drawer Guides
- Linen Closet (Per Plan)
- Drawer Bank
- Beveled Medicine Cabinet
- Ventilation Window
- Towel Bar and Tissue Holder with Satin Nickel Finish
- Privacy Lock

HALL BATH FEATURES

- 60" One-Piece Fiberglass Tub / Shower
- China Self Rimming Sink with Overflow and Pop-Up Drain
- Single-Lever Diverter with Chrome Finish
- Dual Control Faucets with Chrome Finish
- Elongated Water-Saver Commode
- Vanity Lighting Fixture
- Vanity Mirror with Beveled Edge
- Ceiling Exhaust Fan with Light
- 36" High Countertop
- Laminate Countertop
- Laminate Crescent Edge
- 6" Laminate Backsplash
- Beveled Medicine Cabinet
- Full Extension Ball Bearing Drawer Guides
- Ventilation Window
- Towel Bar and Tissue Holder with Satin Nickel Finish
- Privacy Lock

BUILDING YOUR HOME TO GREEN STANDARDS

- Engineered for efficient use of materials
- 80% of construction waste reused or recycled
- Use of engineered lumber
- Low V.O.C. adhesives and paint
- Formaldehyde-free insulation
- Sealed and tested ducting system
- High efficiency toilets
- Efficient distribution plumbing system
- Mechanical fresh air ventilation system



Due to continuous product development and improvement, prices, specifications, and materials are subject to change without notice or obligation. Square footage and other dimensions are approximate. Exterior images may be artist renderings and are not intended to be an accurate representation of the home. Renderings, photos and floor plans may be shown with optional features or third-party additions. All floor plans and features are subject to local code approval. *Skyline is a brand of Champion Home Builders, Inc.

SKYLINE®

499 W Esplanade Ave, San Jacinto, CA 92583

(951) 654-9321



@Skylinehomes1951

Member:

