

SUNSET RIDGE SERIES

SUNSET RIDGE SERIES

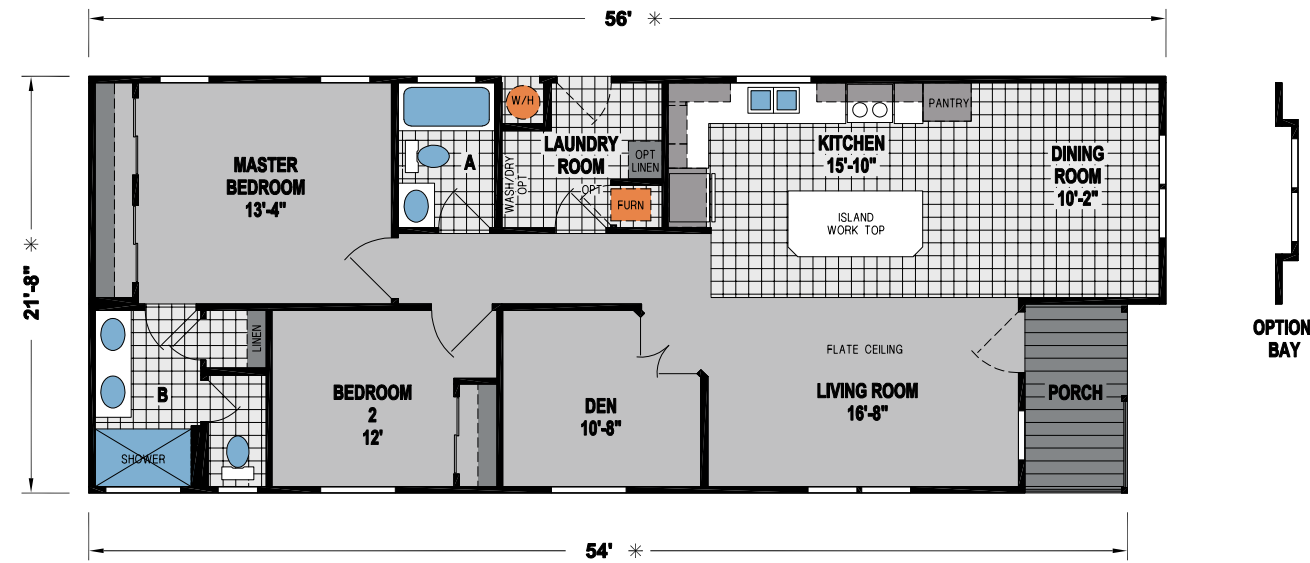
Home is where the heart is, where memories are created, and where life's most important moments are celebrated. Since 1951, Skyline Homes has grown to be one of the most recognized factory-built home builders; a recognition earned by consistently delivering style, quality, and craftsmanship in every home we build. From start to finish, we are involved in your home every step of the way.

At Skyline Homes, we don't just build homes, we build dreams. We design and build our homes with people in mind. From contemporary style to traditional design, we are committed to providing features and finishes that can be enjoyed for a lifetime. We promise you will feel the difference of a Skyline Home. It's the feeling of comfort; the feeling of coming home to a place you truly love.

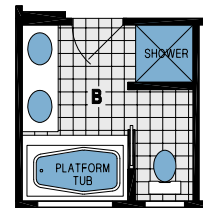


SUNSET RIDGE
K300G

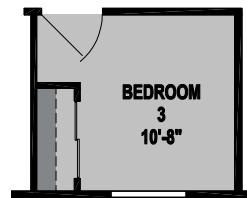
2 BED-2 BATH
1192 SQ.FT.



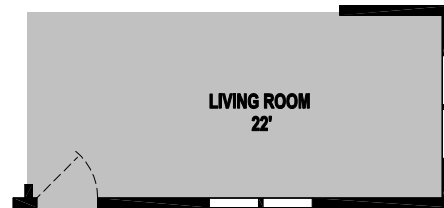
OPTION BAY



OPTION GLAMOUR BATH



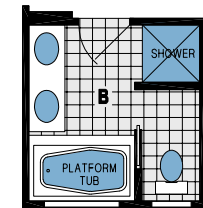
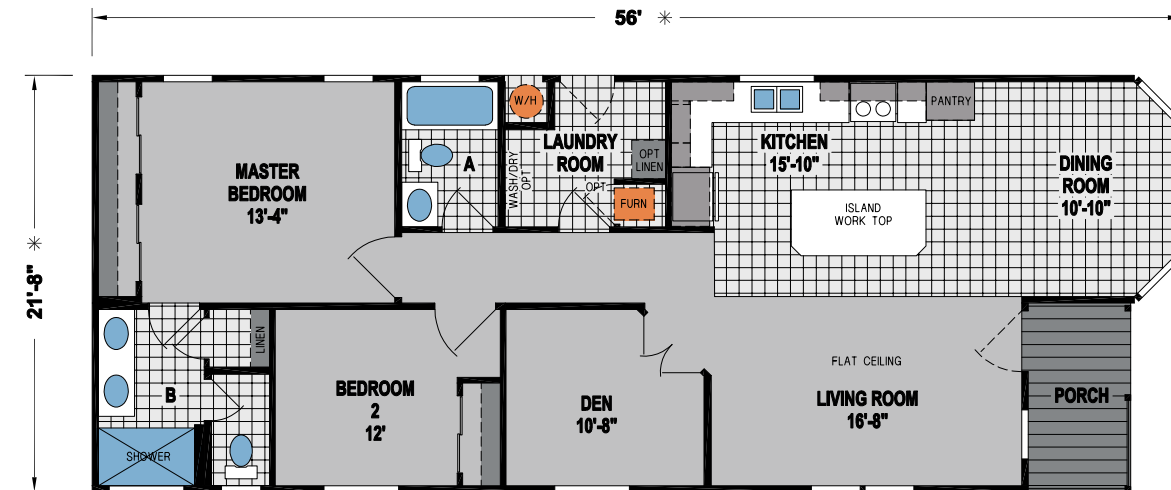
OPTION 3RD BEDROOM



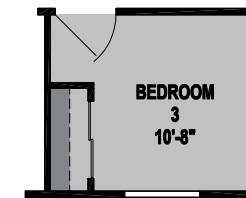
OPTION PORCH DELETE

SUNSET RIDGE
K300H

2 BED-2 BATH
1192 SQ.FT.



OPTION GLAMOUR BATH



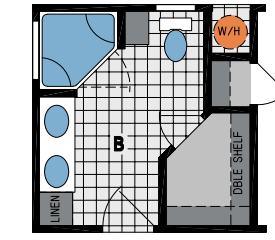
OPTION 3RD BEDROOM



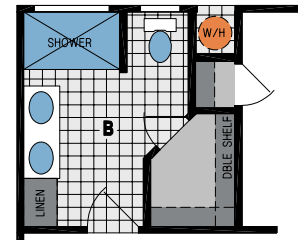
OPTION PORCH DELETE

**SUNSET RIDGE
K117G**

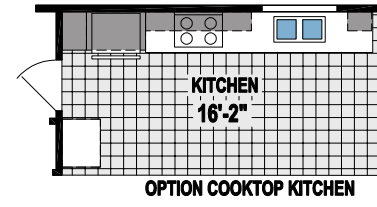
3 BED-2 BATH
1182 SQ.FT.



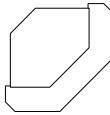
OPTION WATER HEATER LOCATION



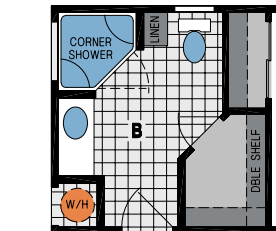
OPTION WATER HEATER LOCATION



OPTION COOKTOP KITCHEN



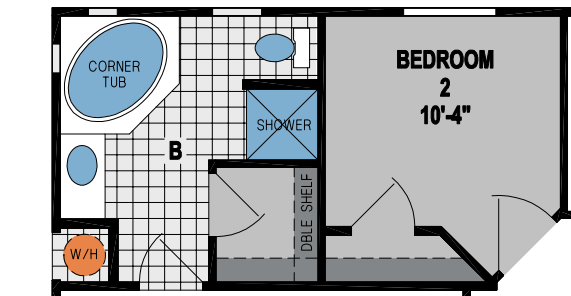
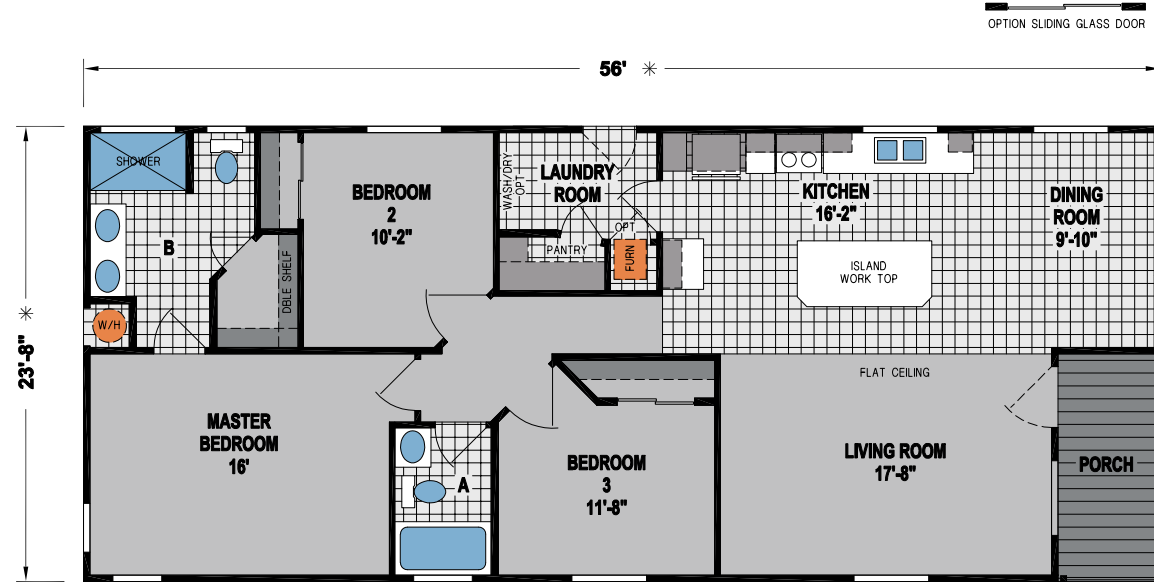
OPTION SNACK BAR ISLAND



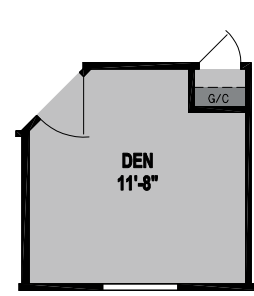
OPTION CORNER SHOWER BATH



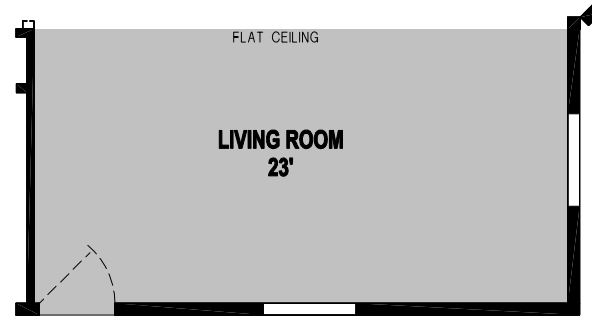
OPTION SINGLE LAV



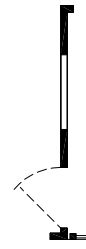
OPTION CORNER TUB BATH



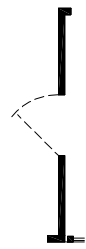
OPTION DEN



ALTERNATE ENTRY/PORCH DELETE



OPTION ENTRY A



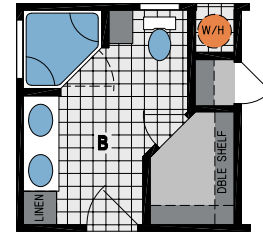
OPTION ENTRY B



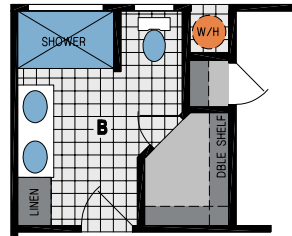
SHOWN WITH OPTIONAL EXTERIOR

**SUNSET RIDGE
K117H**

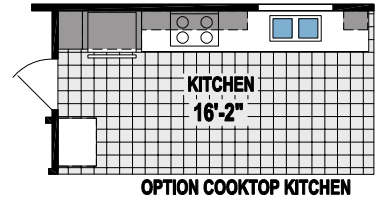
3 BED-2 BATH
1288 SQ.FT.



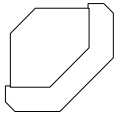
OPTION WATER HEATER LOCATION



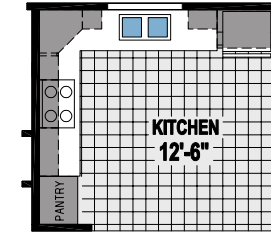
OPTION WATER HEATER LOCATION



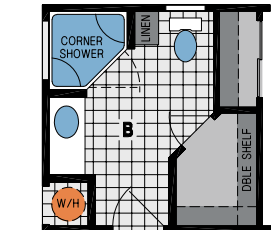
OPTION COOKTOP KITCHEN



OPTION SNACK BAR ISLAND



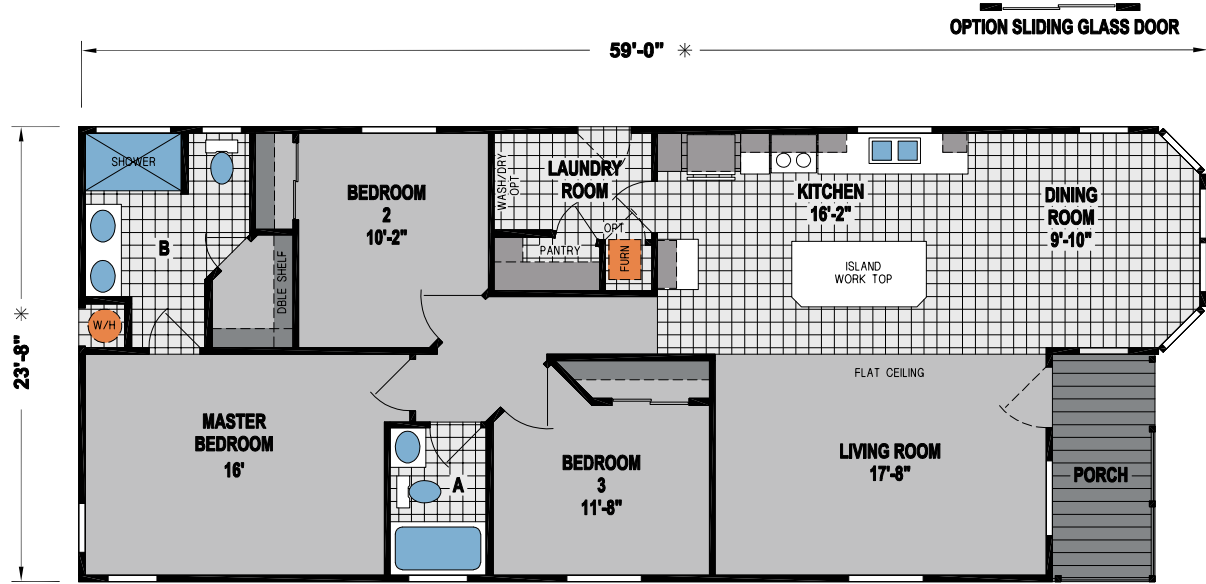
OPTION COOKTOP KITCHEN



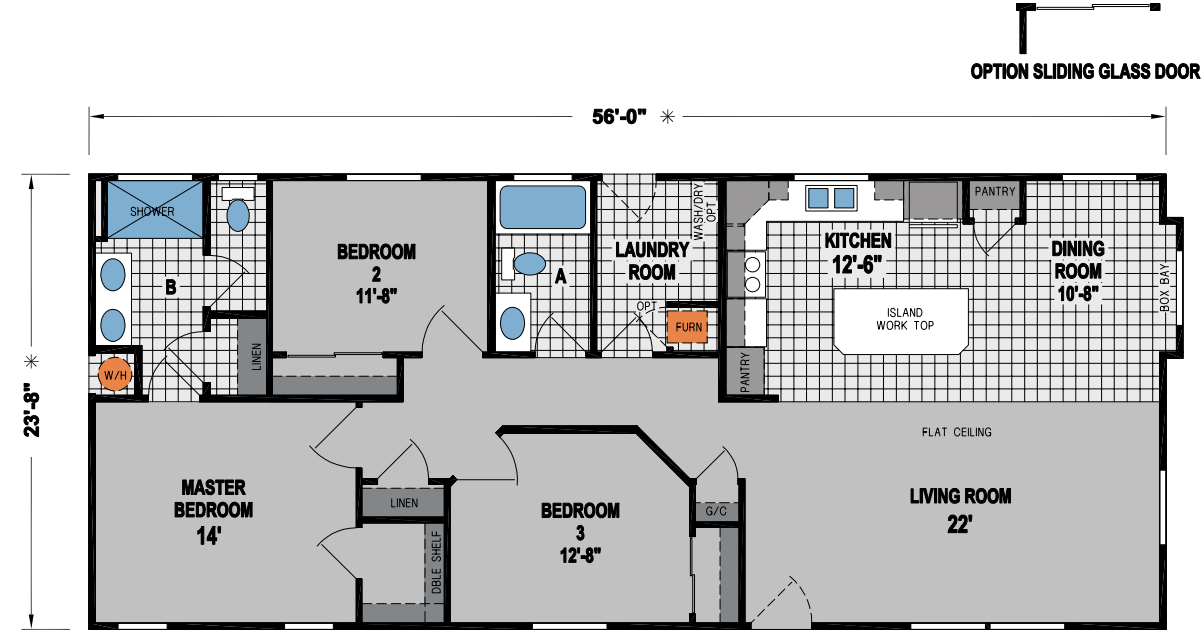
OPTION CORNER SHOWER BATH



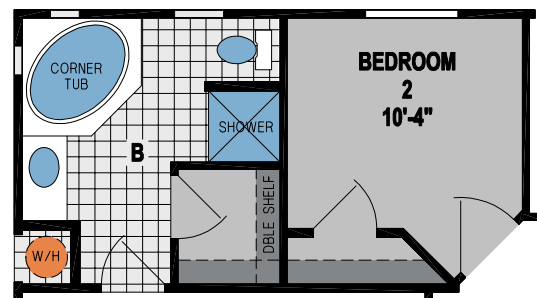
OPTION SINGLE LAV



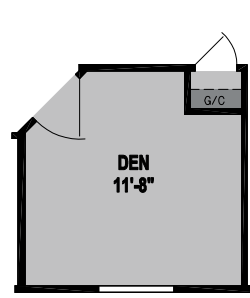
OPTION SLIDING GLASS DOOR



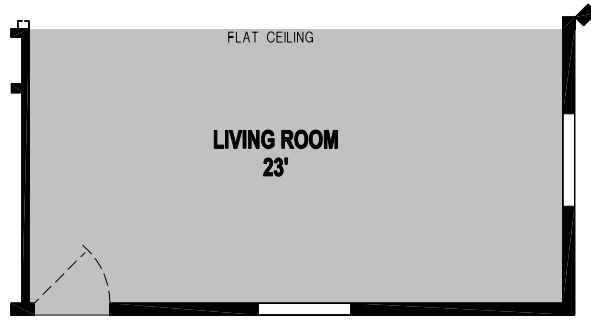
OPTION SLIDING GLASS DOOR



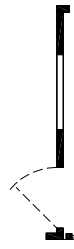
OPTION CORNER TUB BATH



OPTION DEN



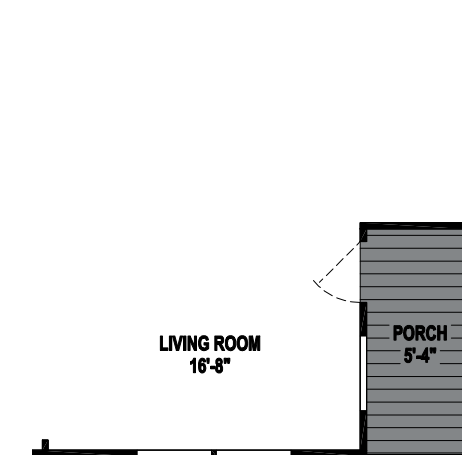
ALTERNATE ENTRY/PORCH DELETE



OPTION ENTRY A



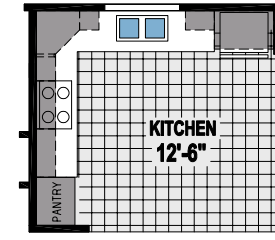
OPTION ENTRY B



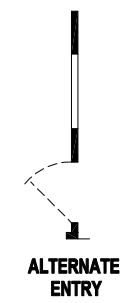
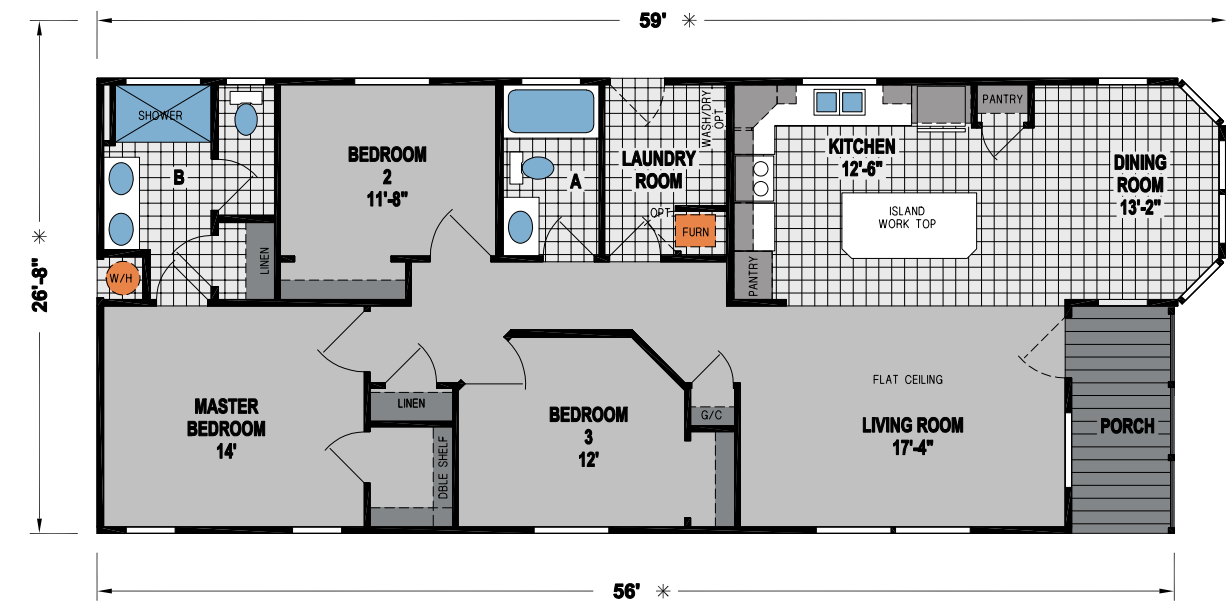
OPTION PORCH

**SUNSET RIDGE
K139G**

3 BED-2 BATH
1331 SQ.FT.



OPTION COOKTOP KITCHEN



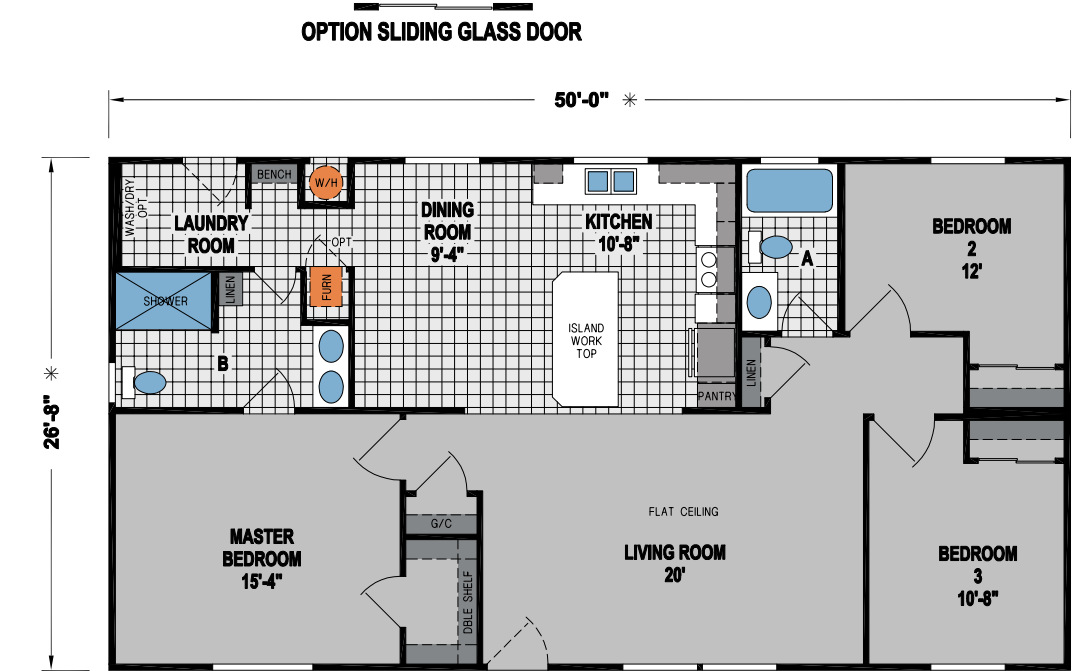
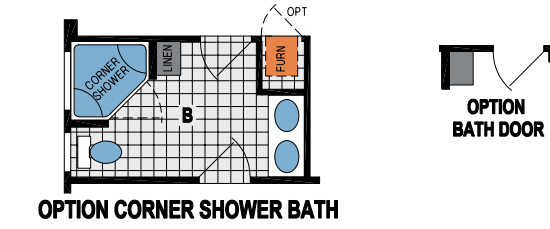
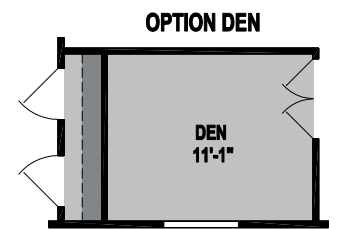
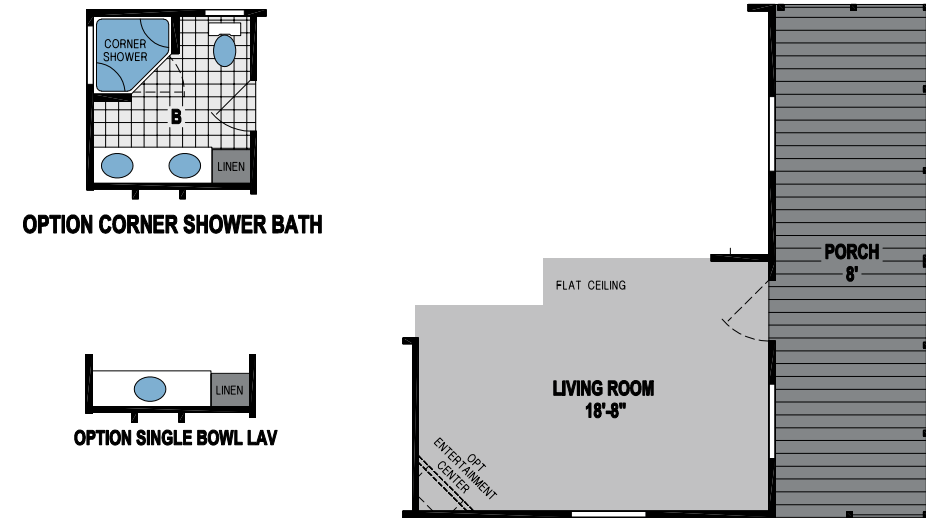
ALTERNATE ENTRY

**SUNSET RIDGE
K139H**

3 BED-2 BATH
1288 SQ.FT.

**SUNSET RIDGE
K500G**

3 BED-2 BATH
1173 SQ.FT.

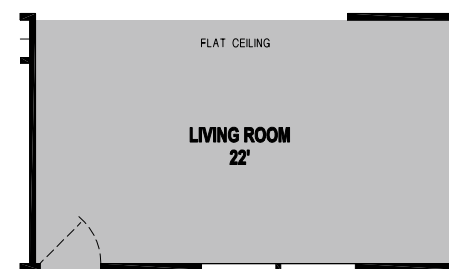
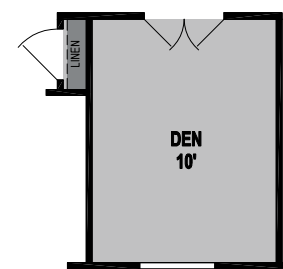


**SUNSET RIDGE
K536G**

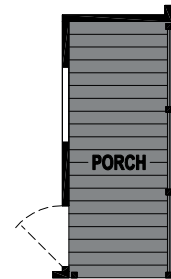
3 BED-2 BATH
1333 SQ.FT.

SUNSET RIDGE
K530G

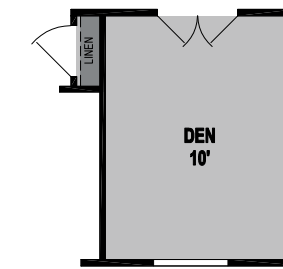
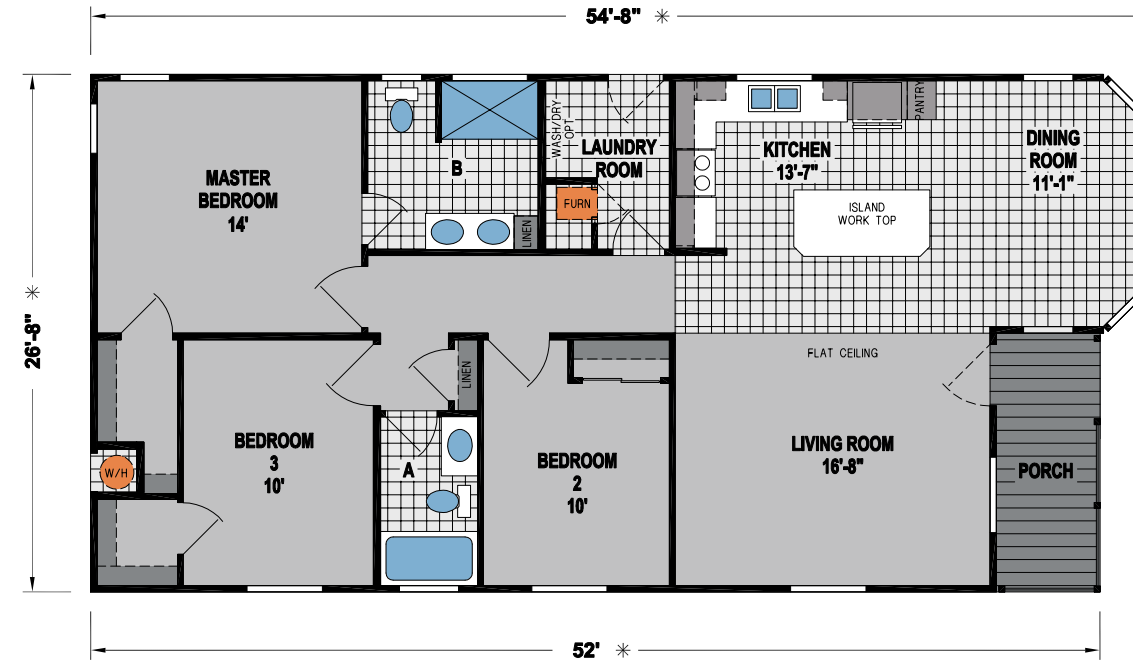
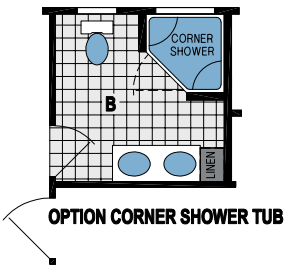
3 BED-2 BATH
1315 SQ.FT.



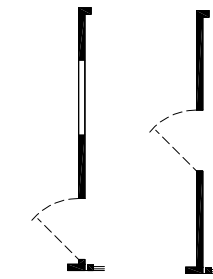
OPTION PORCH DELETE
(1,386 SQ. FT.)



ALTERNATE ENTRY



OPTION DEN



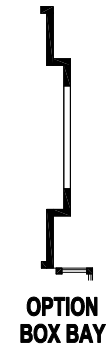
OPTION ENTRY A
OPTION ENTRY B

SUNSET RIDGE
K530H

3 BED-2 BATH
1421 SQ.FT.

SUNSET RIDGE
K594G

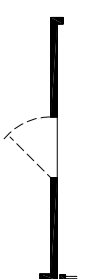
3 BED-2 BATH
1342 SQ.FT.



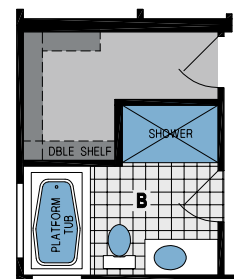
OPTION BOX BAY



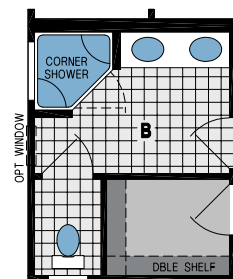
OPTION ENTRY A



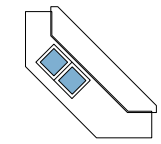
OPTION ENTRY B



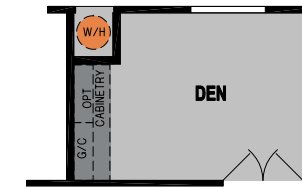
OPTION PLATFORM TUB



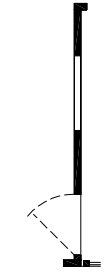
OPTION CORNER SHOWER BATH



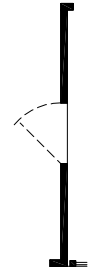
OPTION ISLAND KITCHEN



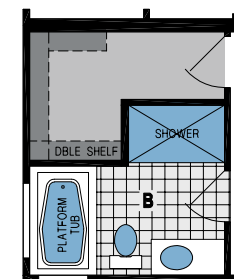
OPTION DEN



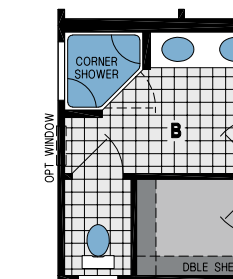
OPTION ENTRY A



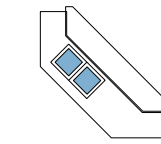
OPTION ENTRY B



OPTION PLATFORM TUB



OPTION CORNER SHOWER BATH



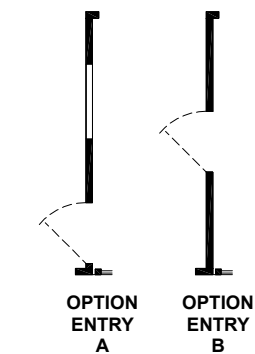
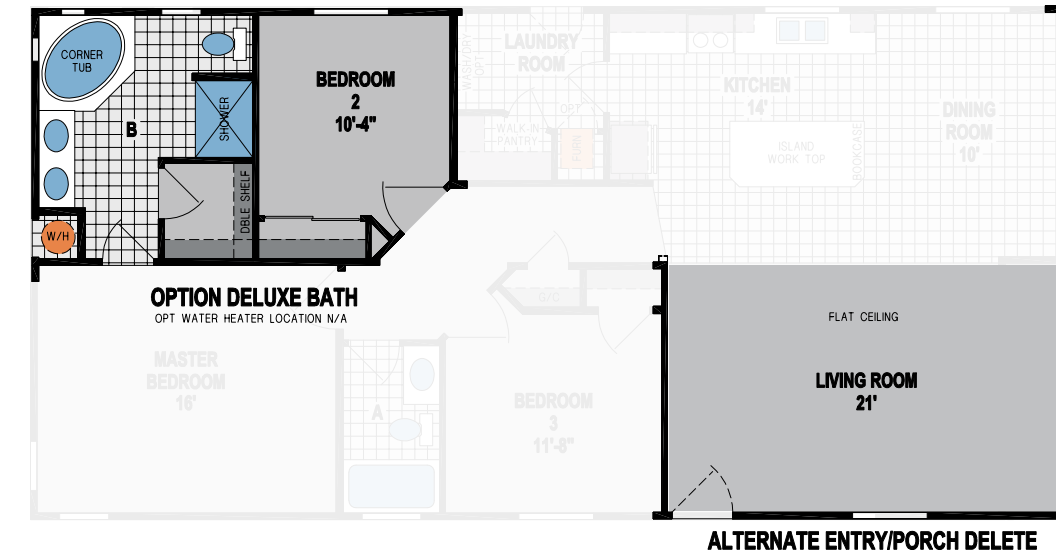
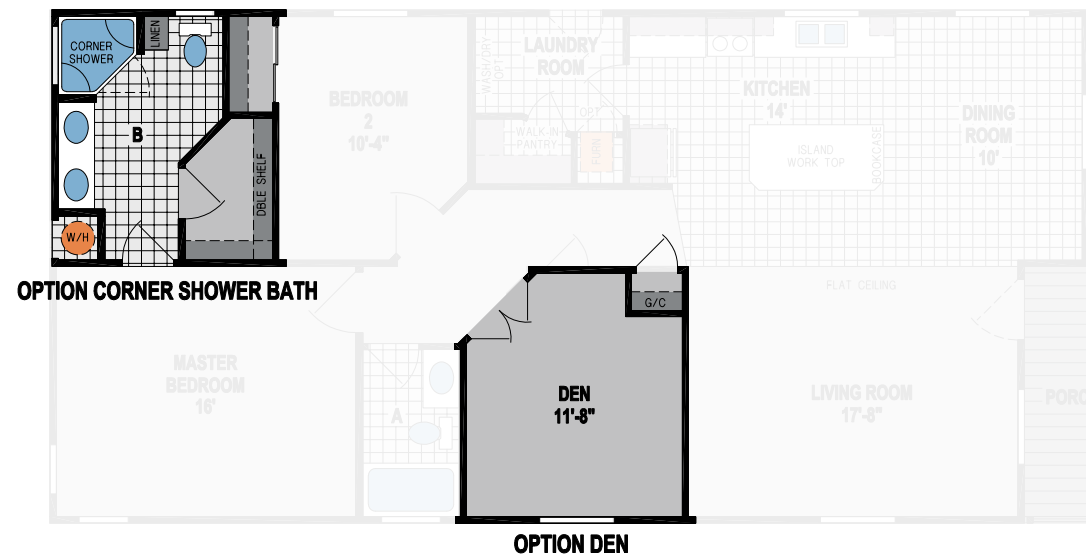
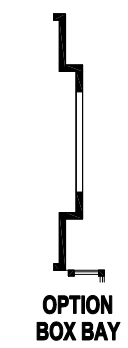
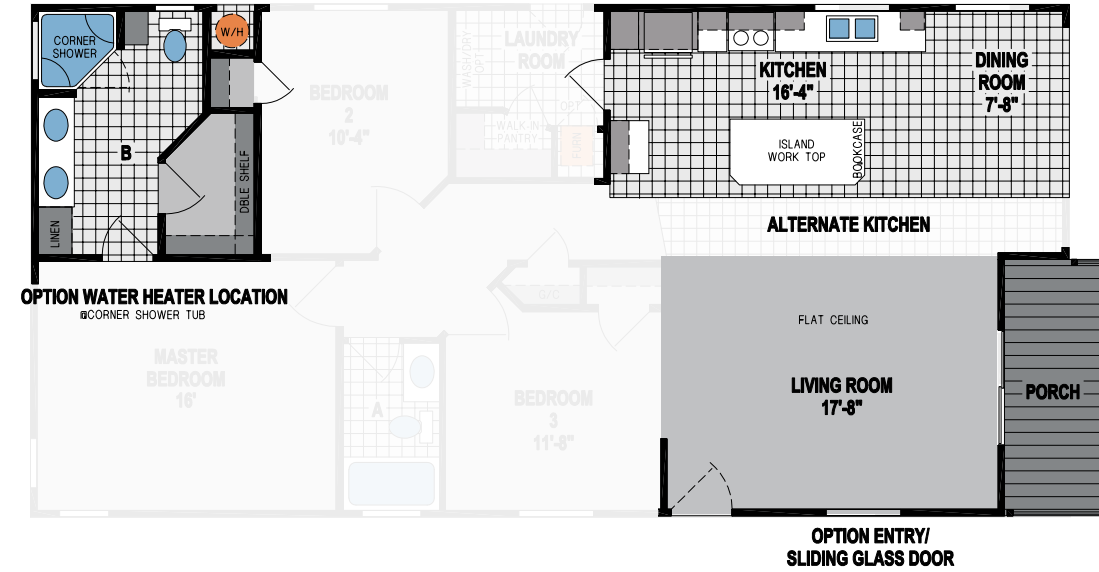
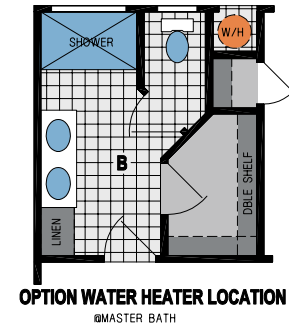
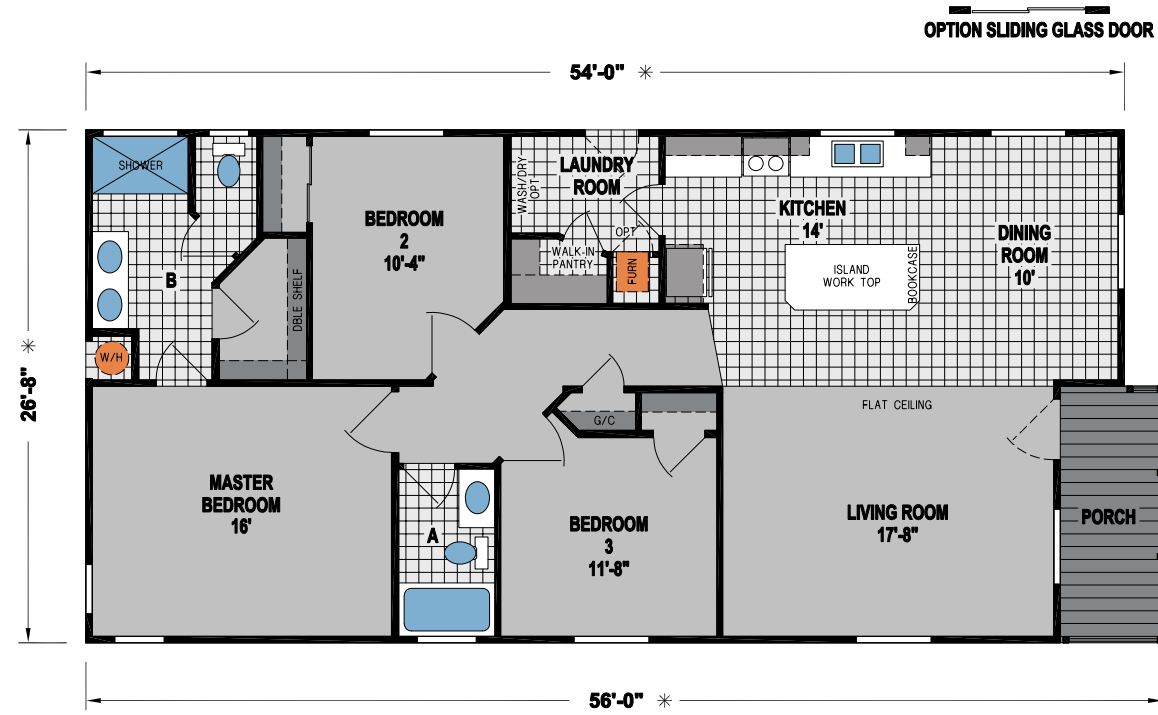
OPTION ISLAND KITCHEN

SUNSET RIDGE
K594H

3 BED-2 BATH
1373 SQ.FT.

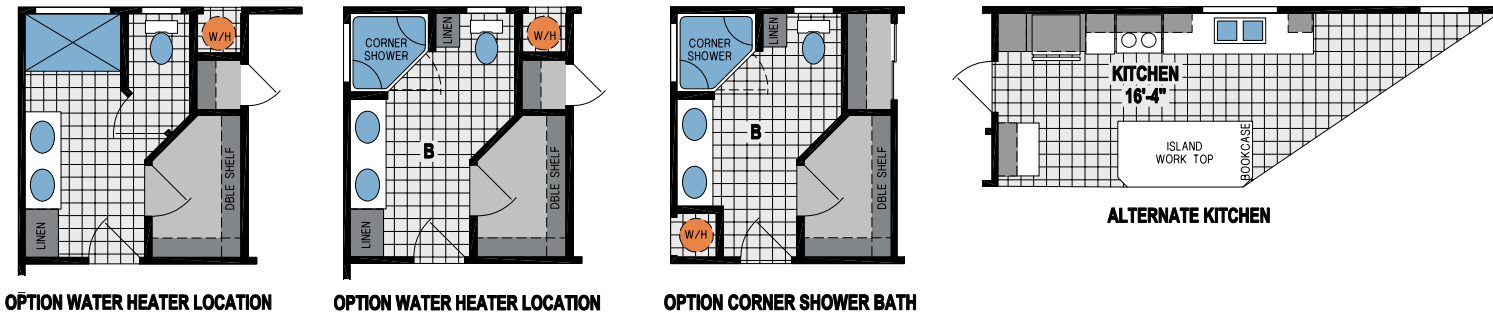
SUNSET RIDGE
K517G

3 BED-2 BATH
1395 SQ.FT.

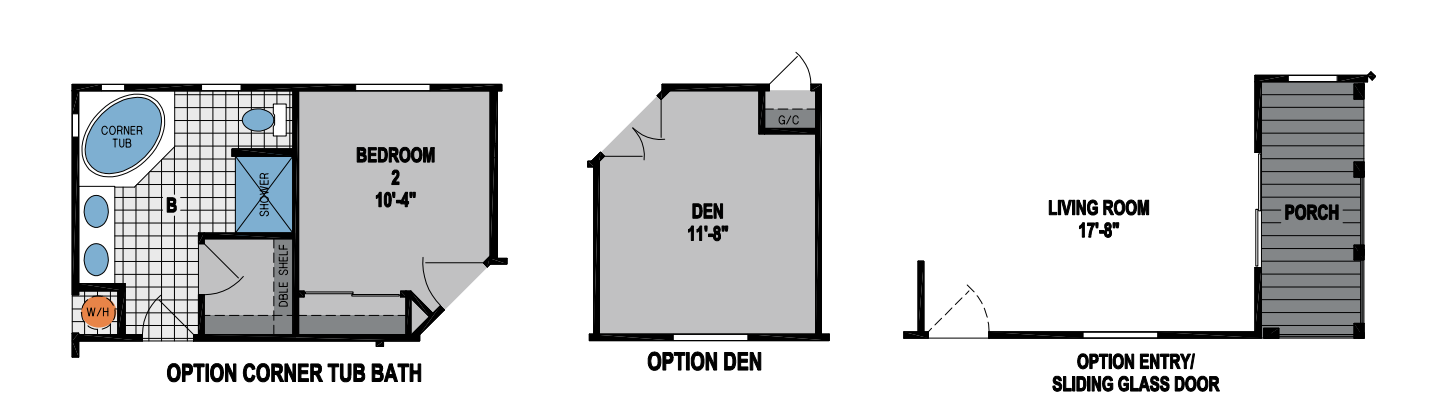
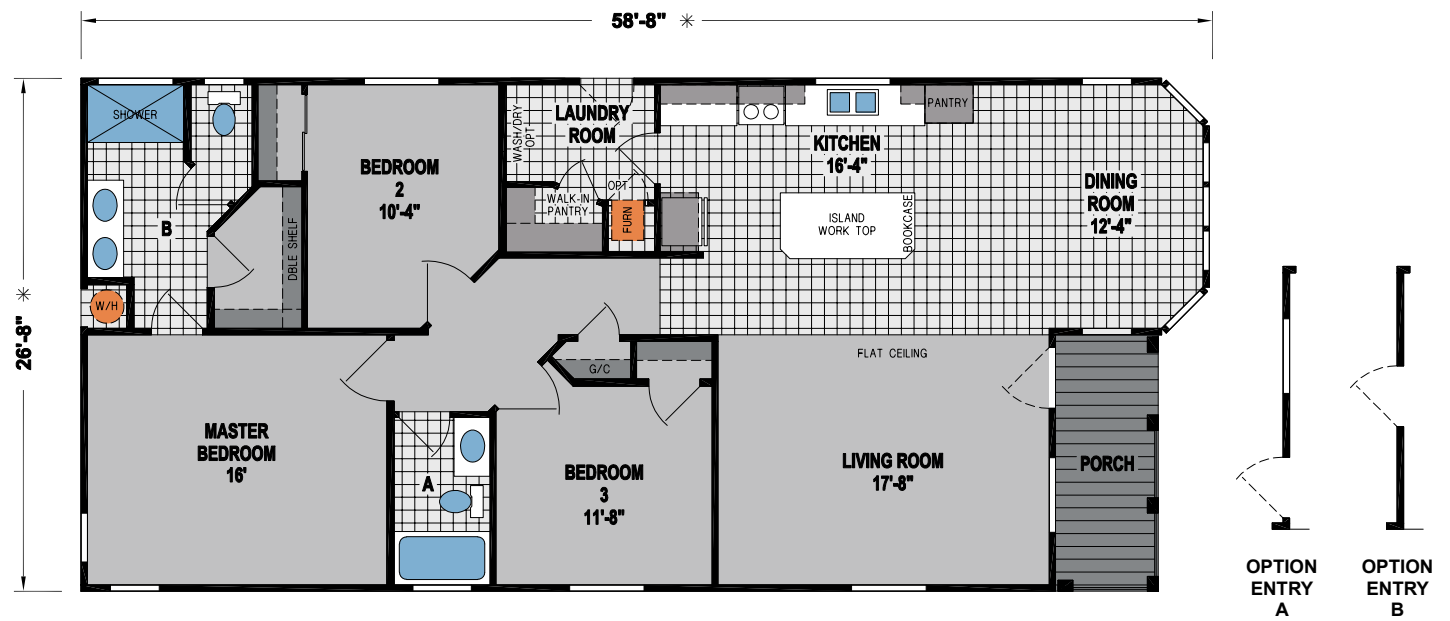


SUNSET RIDGE
K517H

3 BED-2 BATH
1528 SQ.FT.



OPTION WATER HEATER LOCATION OPTION WATER HEATER LOCATION OPTION CORNER SHOWER BATH ALTERNATE KITCHEN



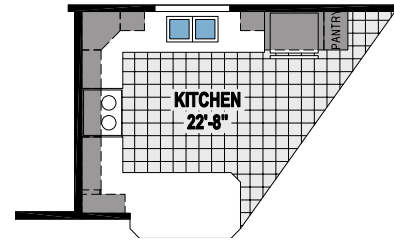
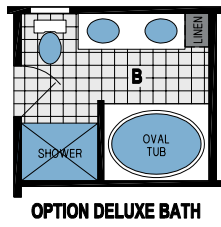
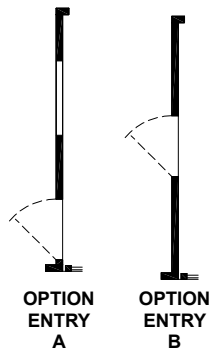
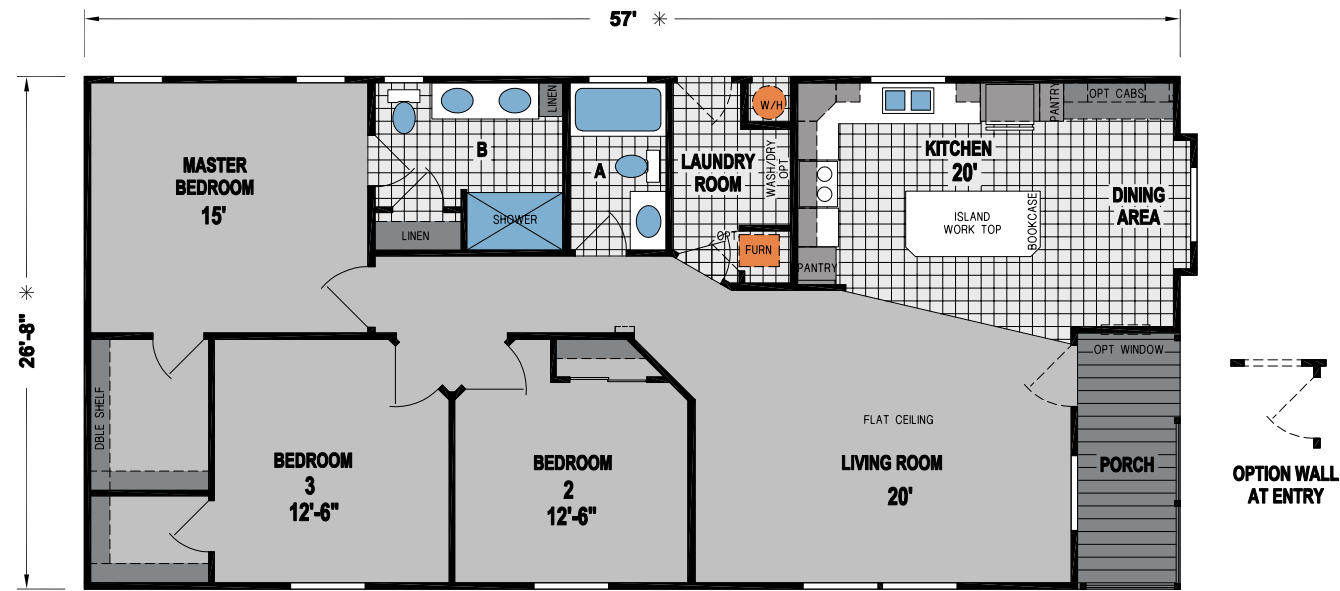
OPTION CORNER TUB BATH OPTION DEN OPTION ENTRY/ SLIDING GLASS DOOR



SHOWN WITH OPTIONAL EXTERIOR

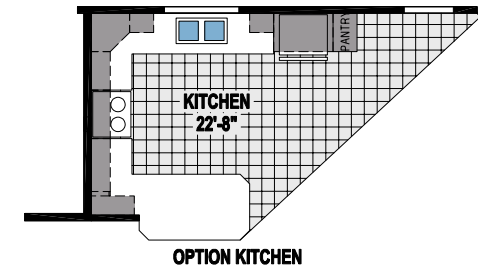
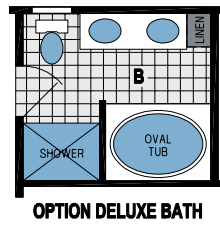
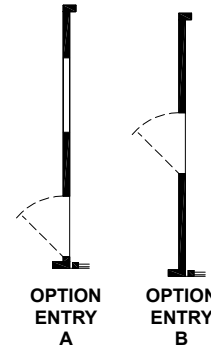
SUNSET RIDGE
K535G

3 BED-2 BATH
1455 SQ.FT.



SUNSET RIDGE
K535H

3 BED-2 BATH
1542 SQ.FT.



**SUNSET RIDGE
K539G**

3 BED-2 BATH
1499 SQ.FT.

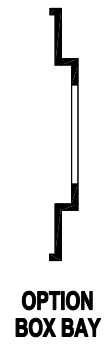
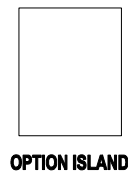
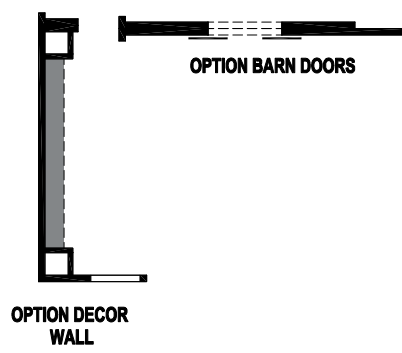
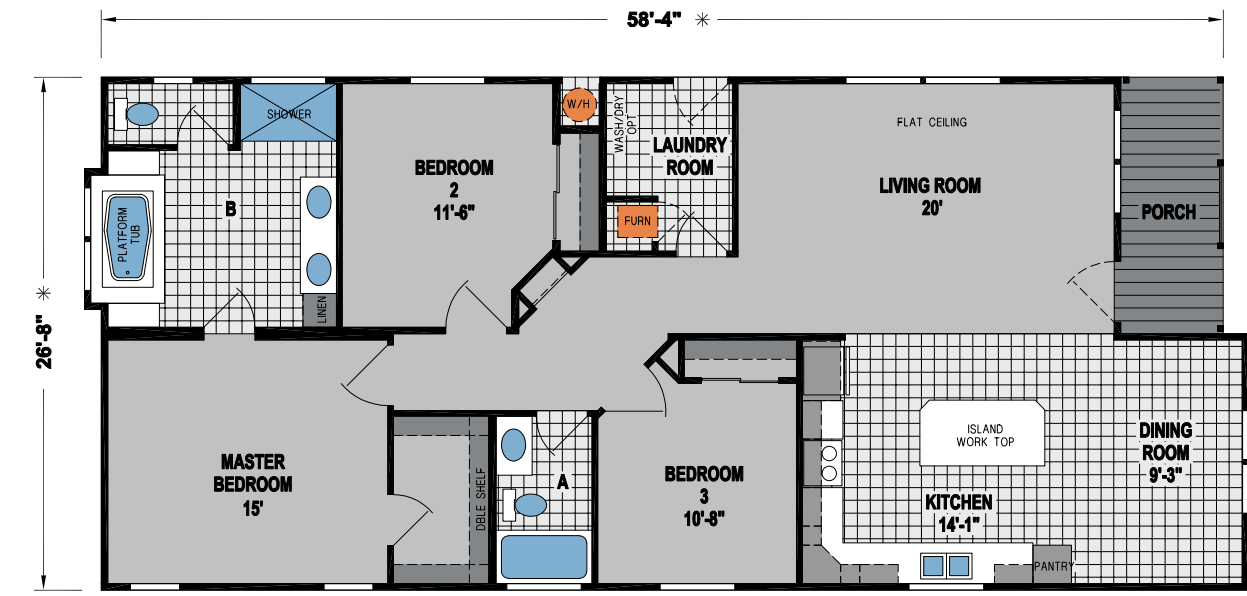
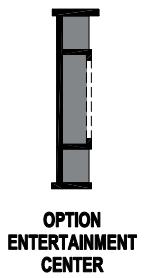
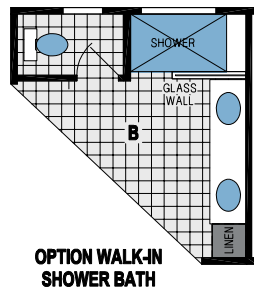
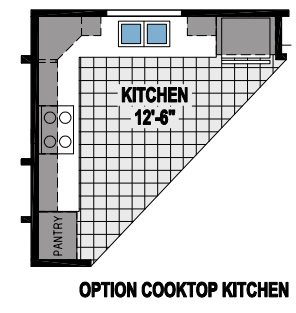
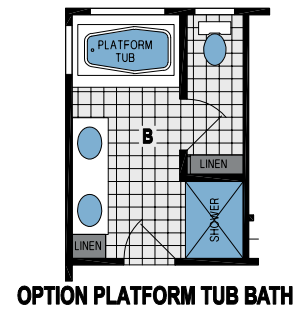
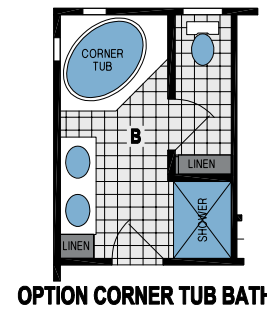


SHOWN WITH OPTIONAL EXTERIOR



SUNSET RIDGE
K539H

3 BED-2 BATH
1452 SQ.FT.



SUNSET RIDGE
K543G

3 BED-2 BATH
1509 SQ.FT.

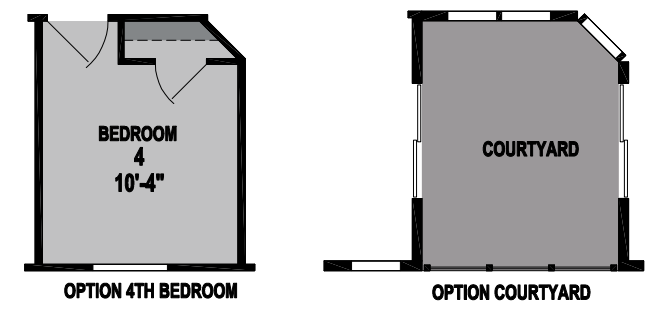
SUNSET RIDGE
K543H

3 BED-2 BATH
1509 SQ.FT.



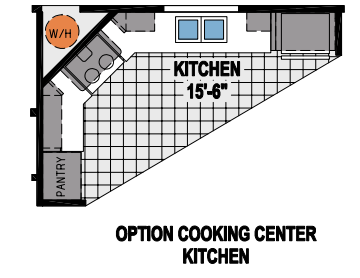
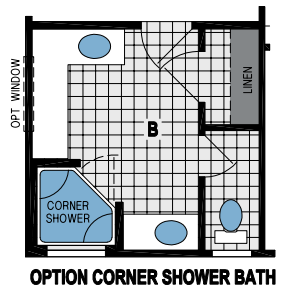
SUNSET RIDGE
K596G

3 BED-2 BATH
1509 SQ.FT.



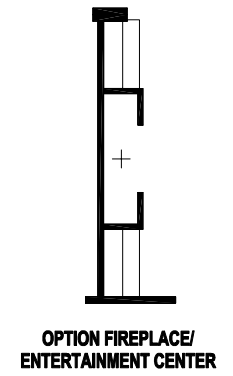
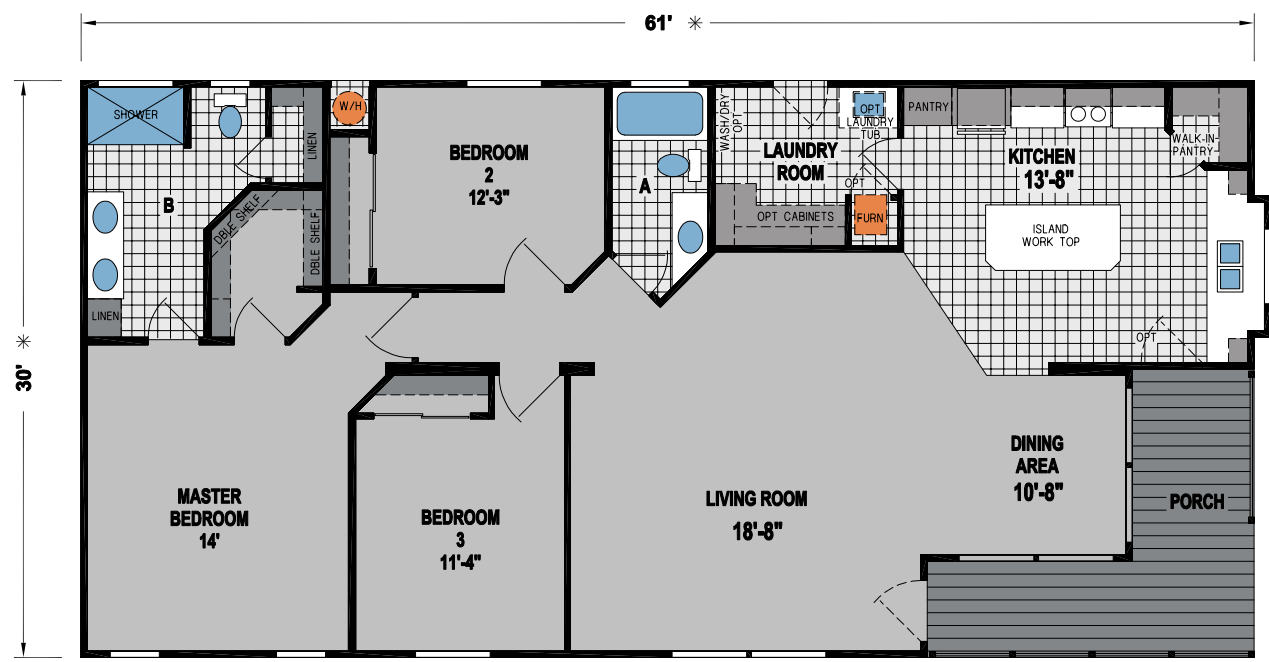
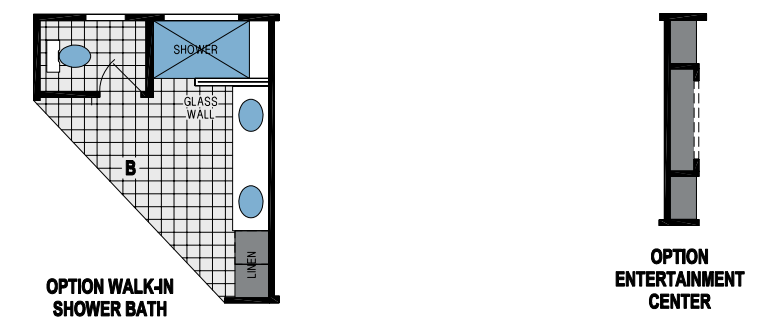
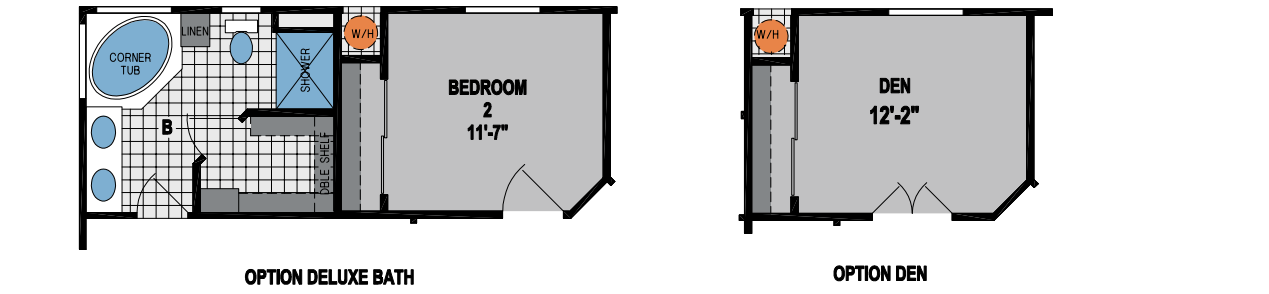
**SUNSET RIDGE
K583G**

3 BED-2 BATH
1554 SQ.FT.



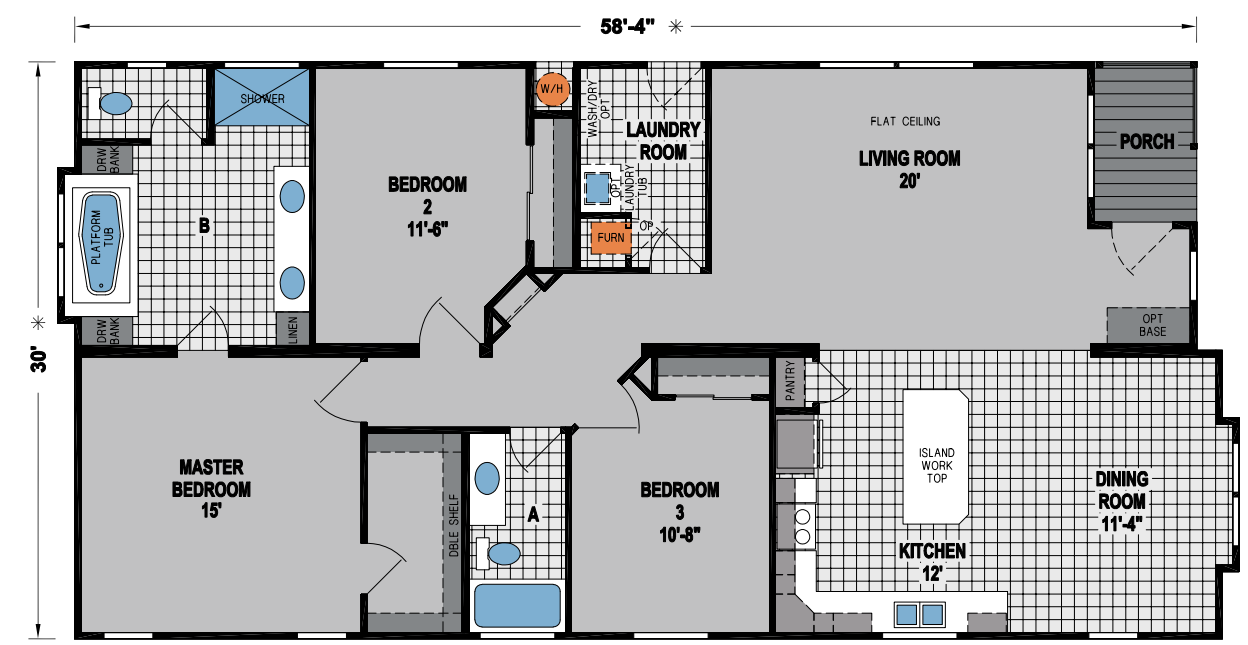
SUNSET RIDGE
K900G

3 BED-2 BATH
1688 SQ.FT.



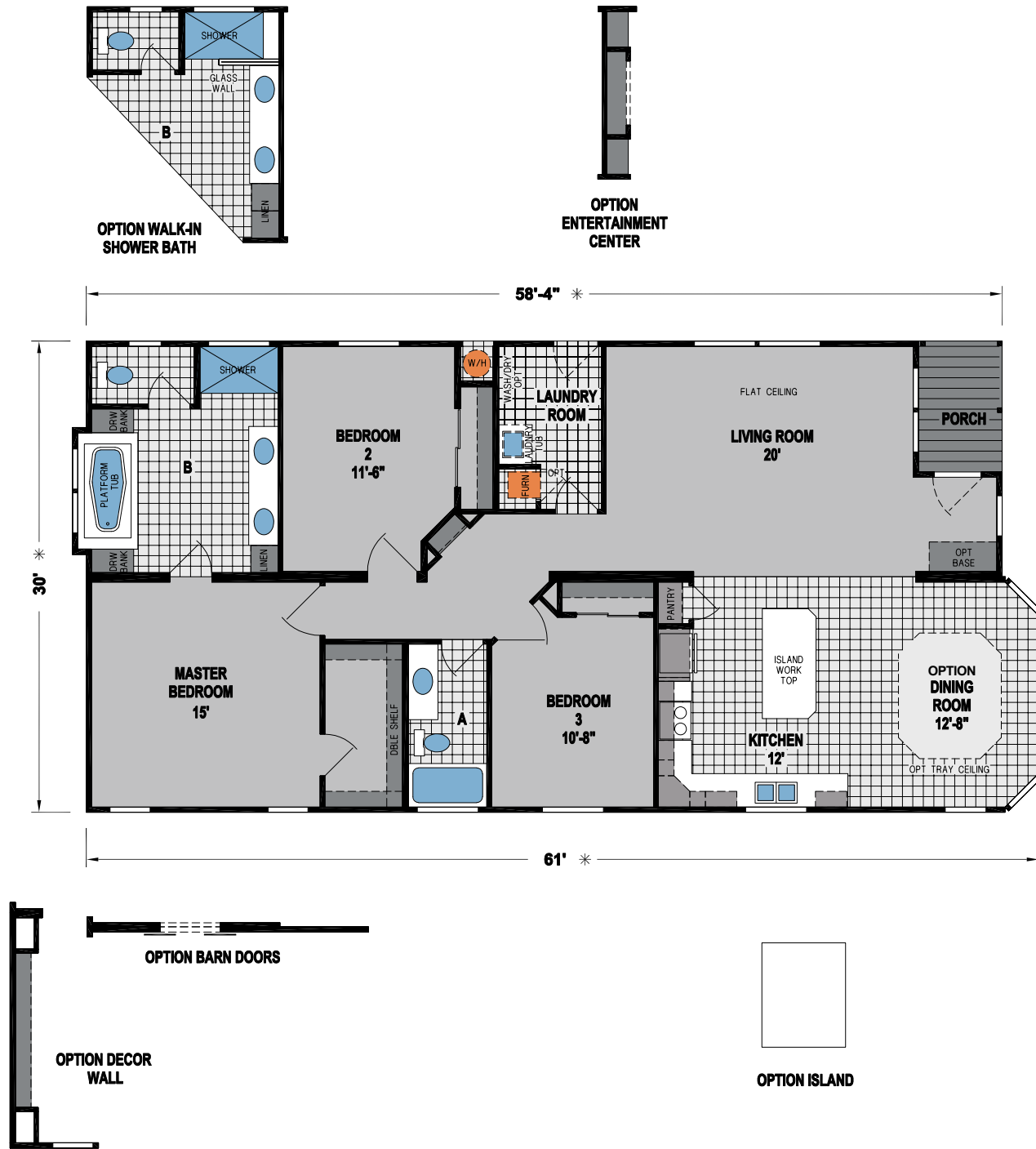
SUNSET RIDGE
K943G

3 BED-2 BATH
1739 SQ.FT.



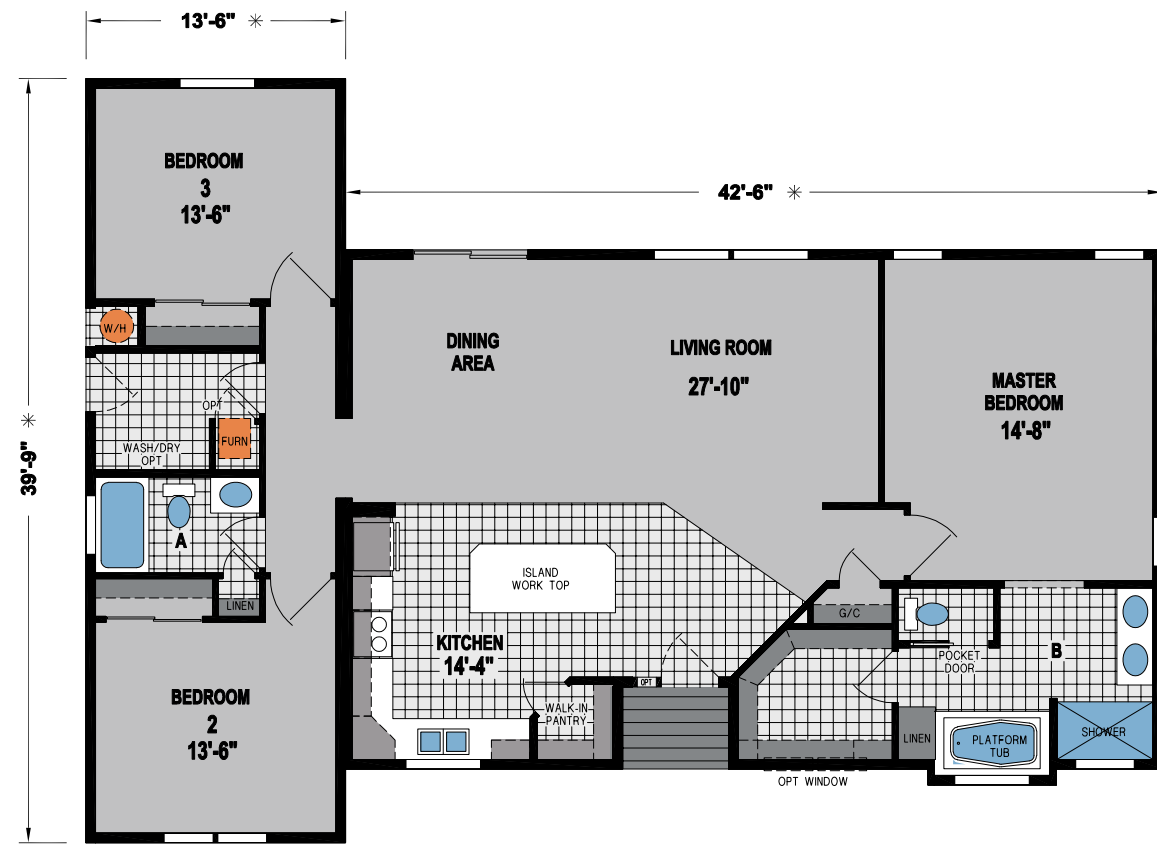
**SUNSET RIDGE
K943H**

3 BED-2 BATH
1747 SQ.FT.



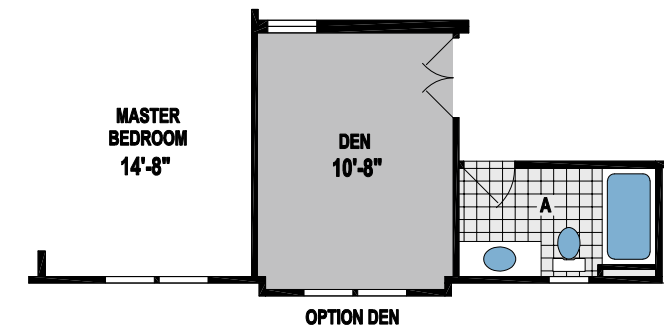
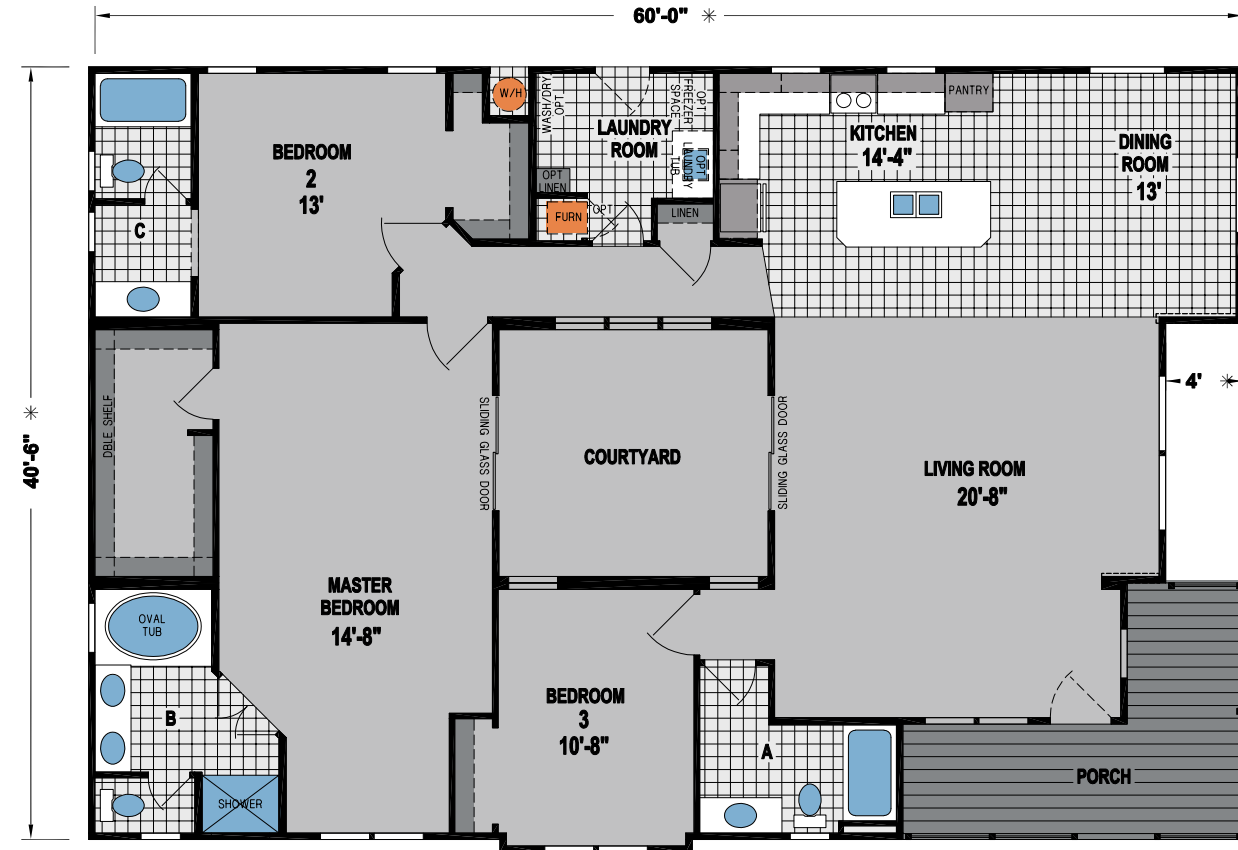
**SUNSET RIDGE
K576G**

3 BED-2 BATH
1689 SQ.FT.



**SUNSET RIDGE
K575G**

3 BED-3 BATH
1947 SQ.FT.



SUNSET RIDGE SERIES

STANDARD FEATURES

CONSTRUCTION

- 9' Sidewalls with Flat Ceiling
- 2X6 Floor Joists (Per Plan)
- 2x8 Floor Joists (Per Plan)
- 2X4 Exterior Sidewalls
- R-33 Ceiling Insulation
- R-11 Wall Insulation
- R-22 Floor Insulation
- 20 lb. Roof Load
- 3:12 Roof Pitch (2:12 on Triple Wide Plans)
- Tongue and Groove OSB Floor Decking
- Dual-Glazed Vinyl Framed Low-E Windows
- Steel Outriggers on Exterior Walls
- Front Porch (Per Plan)
- PEX Water Lines
- Shut-Off Valves at All Sinks and Toilets

EXTERIOR

- Vertical Cement Fiber Siding
- Class "A" Architectural Roof Shingles
- Upgrade Exterior Window Trim Throughout
- Exterior Light at Front and Rear Doors
- 36" Craftsman Front Door with Deadbolt, Peephole and Knocker
- 32" Cottage Rear Door with Deadbolt, Peephole and Knocker
- 12" Front Overhang
- 12" Rear Overhang
- 6" Side Eaves (Per Plan)
- 8" Side Eaves (30-Wide Plans)
- Semi-Gloss Exterior Paint

INTERIOR

- 9' Flat Interior Ceiling Height
- ½" Tape and Texture Drywall Throughout
- Hand-Finished Knock-Down Wall Texture
- Ceiling Crown Molding in Kitchen, Dining Room and Hallway
- Upgrade Sculptured Floor Molding and Door Casing
- Choice of Interior Wall Paint
- White Interior Ceiling
- Wide Hallway
- Walk-In Master Bedroom Closet (Per Plan)
- 36" Wide Interior Passage Doors (Per Plan)
- 2-Panel By-Pass Closet Doors (Per Plan)
- 2-Panel Interior Doors with 3-Mortised Nickel Hinges
- Lever Door Handles with Satin Nickel Finish
- Shaw® Carpet
- 3/8" Rebond Capet Pad
- Congoleum® DiamondFlor™ Vinyl Flooring in Kitchen, Dining, Baths and Utility (Per Plan)
- 2" Faux Wood Blinds with Faux Wood Valance
- Double-Wood Shelf and Pole in Master Bedroom Wardrobe
- Single-Wood Shelf and Pole in Guest Bedroom Wardrobe
- Wood Shelving in Hall Closet and Linen Closets
- Wood Shelf and Pole Above Washer/Dryer Area
- Toe-Kick Registers in Kitchen and Baths

KITCHEN

- Hardwood Shaker Style Cabinets
- 42" Tall Overhead Cabinets Kitchen
- Drawer Over Cabinet Door Construction
- Crown Molding on All Overhead Cabinets
- ¾" Adjustable Base and Overhead Shelves
- Large Gourmet Kitchen Island (Per Plan)
- Full Extension Ball Bearing Drawer Guides
- Whirlpool® Brand Name Appliances with Choice of Black or White
- 18.1 Cu. Ft. Frost-Free Refrigerator
- 30" Deluxe Gas Range with Electronic Ignition, Window, Clock and Timer
- 30" Range Hood Vent
- 6" Recessed Can Lights in Kitchen (Per Plan)
- Upgrade Dining Room Chandelier
- Deep Stainless Steel Self Rimming Sink
- Single-Lever Faucet with Pull-Out Sprayer with Chrome Finish
- Bank of Drawers
- Laminate Countertop
- Laminate Crescent Edge
- 6" Subway Tile Backsplash

ELECTRICAL / HEATING / PLUMBING

- 100 AMP Exterior Electrical Panel Box
- G.F.I. Protected Outlets in Kitchen and Baths
- Exterior G.F.I. Protected Outlet
- USB Receptacle in Kitchen Area
- Smoke Detectors with Battery Back-Up
- Switch Wall Outlet in Living Room and Bedrooms
- 4" Recessed Can Lights in Kitchen (Per Plan)
- Upgrade Dining Room Chandelier
- Shut-Off Valves Throughout
- Silent Rocker Light Switches
- 3-Way Switch in Hall and Utility Room
- 40-Gallon Gas Water Heater
- Down Flow Gas Furnace
- Manual Thermostat
- Plumb for Washer
- Prep for Gas Dryer
- Recessed Dryer Vent Box
- Recessed Ice Maker Box

MASTER BATH FEATURES

- 60" Fiberglass Walk-in Shower
- Privacy Water Closet
- China Self Rimming Sink with Overflow and Pop-Up Drain
- Single-Lever Diverter with Chrome Finish
- Dual Sinks
- Dual-Control Faucets with Chrome Finish
- Elongated Water-Saver Commode
- Vanity Lighting Fixtures
- Vanity Mirror with Beveled Edge
- Ceiling Exhaust Fan with Light
- 36" High Countertop
- Laminate Countertop
- Laminate Crescent Edge
- 6" Subway Tile Backsplash
- Full Extension Ball Bearing Drawer Guides
- Linen Cabinet or Linen Closet
- Drawer Bank
- Beveled Medicine Cabinet
- Ventilation Window
- Towel Bar and Tissue Holder with Satin Nickel Finish
- Privacy Lock

HALL BATH FEATURES

- 60" One-Piece Fiberglass Tub / Shower
- China Self Rimming Sink with Overflow and Pop-Up Drain
- Single-Lever Diverter with Chrome Finish
- Dual-Control Faucets with Chrome Finish
- Elongated Water-Saver Commode
- Vanity Lighting Fixture
- Vanity Mirror with Beveled Edge
- Ceiling Exhaust Fan with Light
- 36" High Countertop
- Laminate Countertop
- Laminate Crescent Edge
- 6" Subway Tile Backsplash
- Beveled Medicine Cabinet
- Full Extension Ball Bearing Drawer Guides
- Ventilation Window
- Towel Bar and Tissue Holder with Satin Nickel Finish
- Privacy Lock

BUILDING YOUR HOME TO GREEN STANDARDS

- Engineered for efficient use of materials
- 80% of construction waste reused or recycled
- Use of engineered lumber
- Low V.O.C. adhesives and paint
- Formaldehyde-free insulation
- Sealed and tested ducting system
- High efficiency toilets
- Efficient distribution plumbing system
- Mechanical fresh air ventilation system



Due to continuous product development and improvement, prices, specifications, and materials are subject to change without notice or obligation. Square footage and other dimensions are approximate. Exterior images may be artist renderings and are not intended to be an accurate representation of the home. Renderings, photos and floor plans may be shown with optional features or third-party additions. All floor plans and features are subject to local code approval. *Skyline is a brand of Champion Home Builders, Inc.

SKYLINE®

499 W Esplanade Ave, San Jacinto, CA 92583

(951) 654-9321



@Skylinehomes1951

Member:

